

## How to access on campus Wi-Fi (known as Eduroam) on a smartphone

All TUS campuses have a Wi-Fi service for staff and students. It is named Eduroam (short for Educational Roaming). Eduroam is also available in many public buildings in Ireland and in many third level colleges throughout the world. Logging into Eduroam requires your staff or student username and password (irrespective of where you are).

As models of smartphones can vary, these instructions provide the best method of ensuring your phone can connect to Eduroam.

1. In the Apple Apps Store or Google's PlayStore, search for "Get Eduroam" (see fig 1 below), then click on the download symbol as indicated by the arrow.
2. Once downloaded, click on the **Open** button as shown by the arrow in Fig 2.
3. A Search box as shown by the red outline in Fig 3 appears.

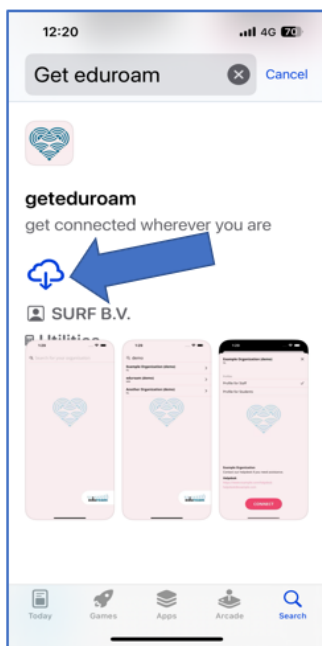


Fig 1

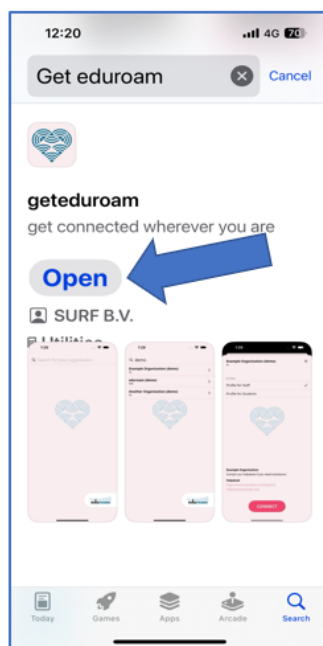


Fig 2



Fig 3

4. Type "Shannon" into the search box, as shown below in fig 4 and click **Enter**. TUS appears as an option. Click it.
5. A window will appear as shown in Fig 5. Click **Allow**.
6. Another window will appear prompting a login (see Fig 6). Input your full TUS email address into the Username field i.e. if you are a student with a student number of A00123456, input [A00123456@student.tus.ie](mailto:A00123456@student.tus.ie).



Fig 4

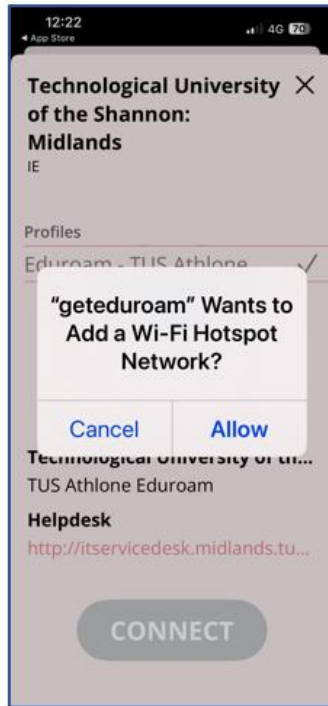


Fig 5

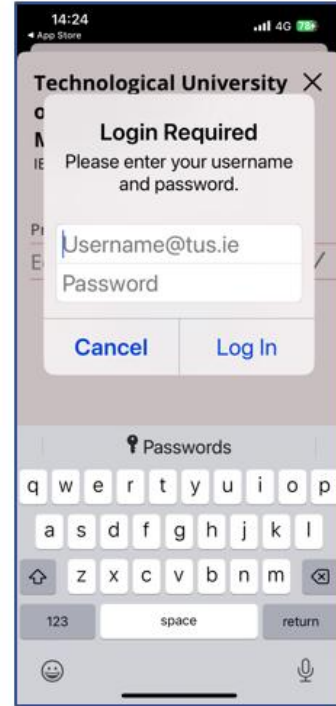


Fig 6

7. A window as shown in Fig 7 below will appear. Click **Join**.
8. Your smartphone will connect to Eduroam as shown in Fig 8.

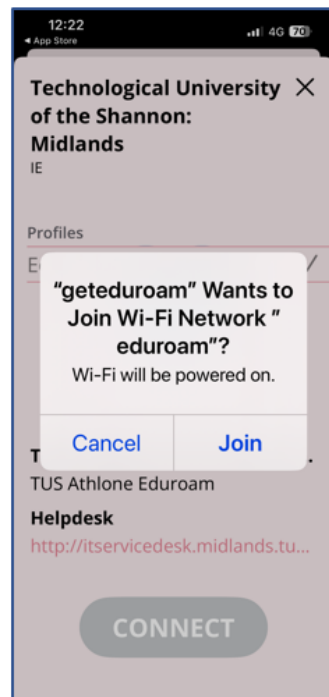


Fig 7

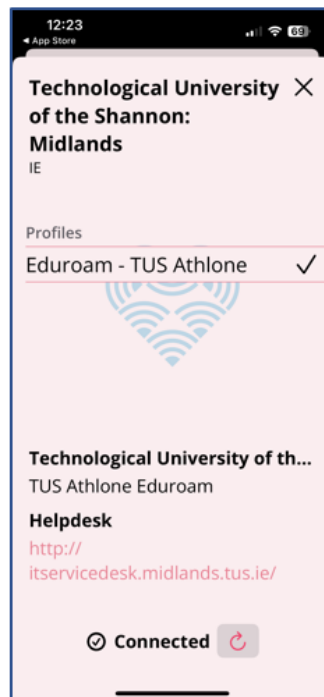


Fig 8