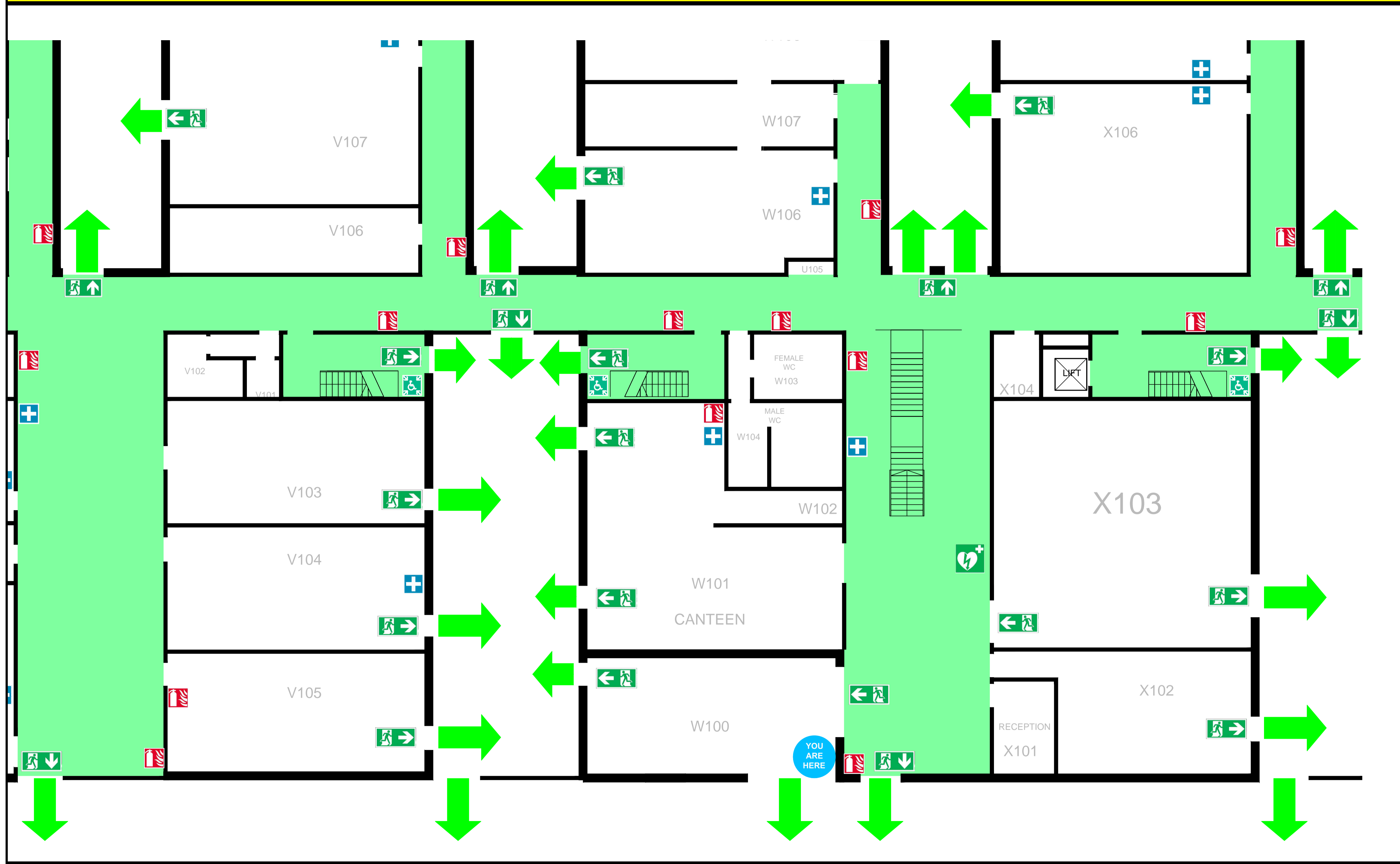


EMERGENCY EVACUATION PLAN



FIRE ACTION
 The Fire Alarm Warning is given by a continuous sounding bell tone. Follow procedures below and instructions of Evacuation Marshals and Fire Wardens

EVACUATION PROCEDURE

- Proceed to the nearest emergency exit
- Evacuate the building quickly and calmly
- Close all doors behind you
- Report to an Assembly Point

DO NOT take unnecessary risks
 DO NOT stop to collect personal belongings
 DO NOT run, walk calmly and quietly
 DO NOT use the lifts, use the stairs
 DO NOT re-enter the building until told it is safe to do so.

MEDICAL EMERGENCY
DIAL - 112
 Then, contact AIT Campus Emergency Response Team on (087) 111 4444

GENERAL EMERGENCY
 To contact the Gardai, Fire Brigade, Ambulance: **DIAL - 112**
 To contact the AIT Emergency Response Team: **DIAL - (087) 111 4444**

SYMBOLS

	You are here indicator		First Aid Box
	Emergency escape		Defibrillator
	Direction of escape arrow		Fire extinguisher
	Emergency escape route		Safe Refuge Point

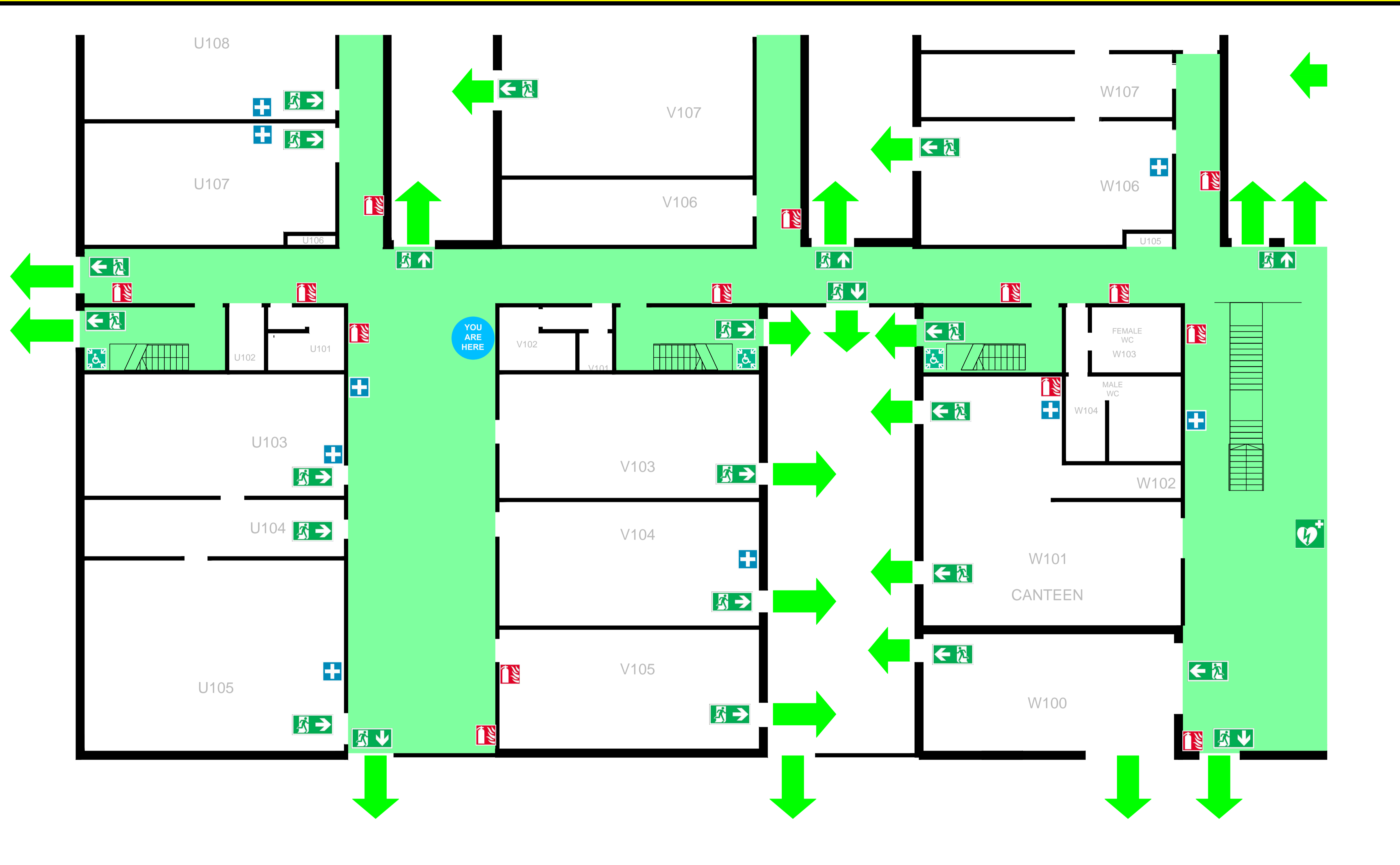
	Title: Eng. First Floor X,Y,Z East	
	Revision	Date
	A	24/06/2015

ON DISCOVERING A FIRE

- Activate the nearest red Break Glass Unit
- To contact the Fire Brigade - Dial 112
- Proceed to the nearest Emergency Exit and report to an Assembly Point
- To contact AIT Emergency Response Team - Dial (087) 111 4444

LOCATION:
ENGINEERING BUILDING
GROUND FLOOR
(Block V, W, X, East)

EMERGENCY EVACUATION PLAN



FIRE ACTION
 The Fire Alarm Warning is given by a continuous sounding bell tone. Follow procedures below and instructions of Evacuation Marshals and Fire Wardens

EVACUATION PROCEDURE

- Proceed to the nearest emergency exit
- Evacuate the building quickly and calmly
- Close all doors behind you
- Report to an Assembly Point

DO NOT take unnecessary risks
 DO NOT stop to collect personal belongings
 DO NOT run, walk calmly and quietly
 DO NOT use the lifts, use the stairs
 DO NOT re-enter the building until told it is safe to do so.

MEDICAL EMERGENCY
DIAL - 112
 Then, contact AIT Campus Emergency Response Team on (087) 111 4444

GENERAL EMERGENCY
 To contact the Gardai, Fire Brigade, Ambulance: **DIAL - 112**
 To contact the AIT Emergency Response Team: **DIAL - (087) 111 4444**

SYMBOLS

	You are here indicator		First Aid Box
	Emergency escape		Defibrillator
	Direction of escape arrow		Fire extinguisher
	Emergency escape route		Safe Refuge Point

	Title: Eng. Ground Floor U, V, W East	
	Revision	Date
	A	24/06/2015

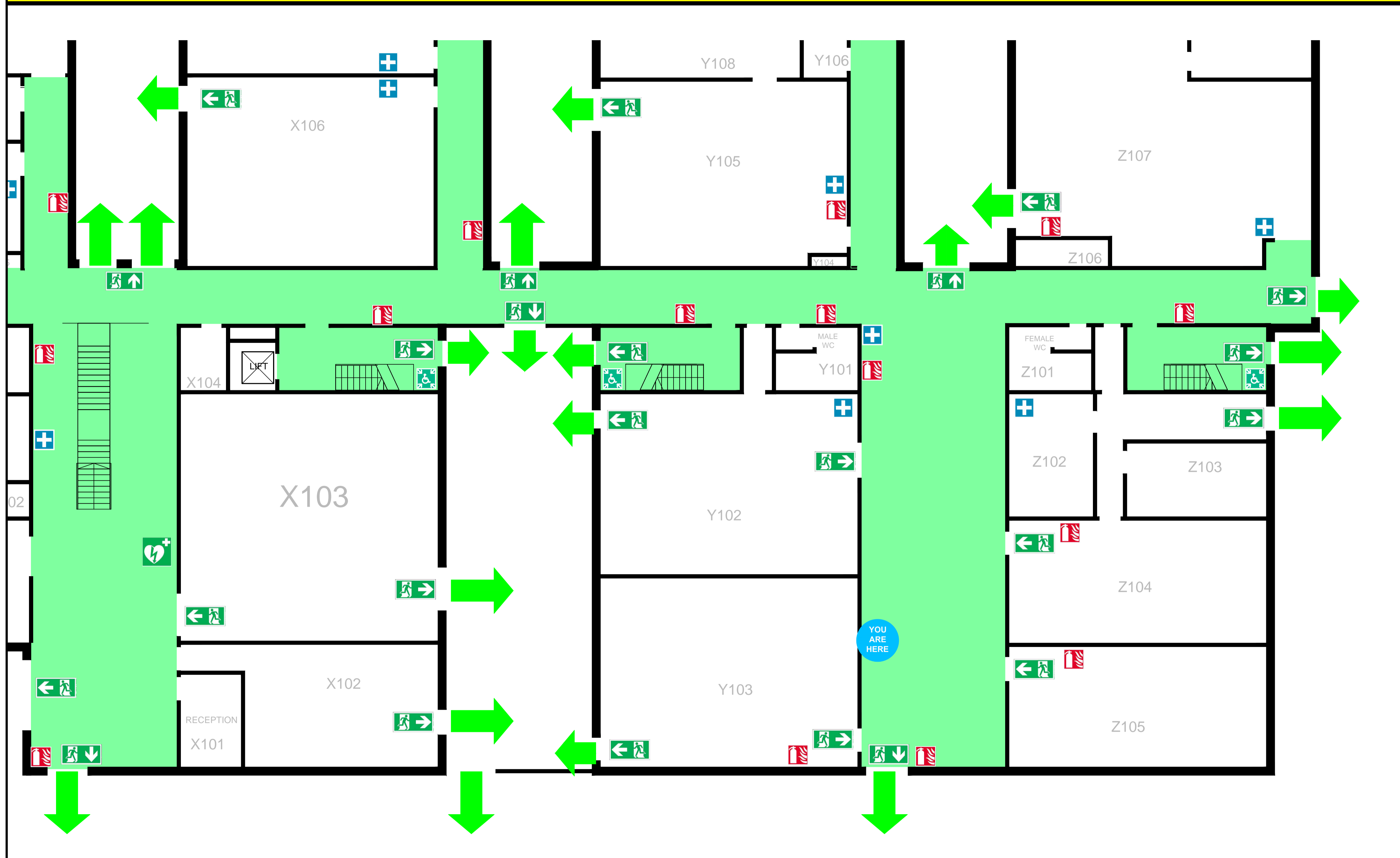
ON DISCOVERING A FIRE

- Activate the nearest red Break Glass Unit
- To contact the Fire Brigade - Dial 112
- Proceed to the nearest Emergency Exit and report to an Assembly Point
- To contact AIT Emergency Response Team - Dial (087) 111 4444

LOCATION:
ENGINEERING BUILDING
GROUND FLOOR
(Block U,V,W East)



EMERGENCY EVACUATION PLAN



FIRE ACTION
 The Fire Alarm Warning is given by a continuous sounding bell tone. Follow procedures below and instructions of Evacuation Marshals and Fire Wardens

EVACUATION PROCEDURE

- Proceed to the nearest emergency exit
- Evacuate the building quickly and calmly
- Close all doors behind you
- Report to an Assembly Point

DO NOT take unnecessary risks
 DO NOT stop to collect personal belongings
 DO NOT run, walk calmly and quietly
 DO NOT use the lifts, use the stairs
 DO NOT re-enter the building until told it is safe to do so.

MEDICAL EMERGENCY
DIAL - 112
 Then, contact AIT Campus Emergency Response Team on (087) 111 4444

GENERAL EMERGENCY
 To contact the Gardai, Fire Brigade, Ambulance: **DIAL - 112**
 To contact the AIT Emergency Response Team: **DIAL - (087) 111 4444**

SYMBOLS

	You are here indicator		First Aid Box
	Emergency escape		Defibrillator
	Direction of escape arrow		Fire extinguisher
	Emergency escape route		Safe Refuge Point

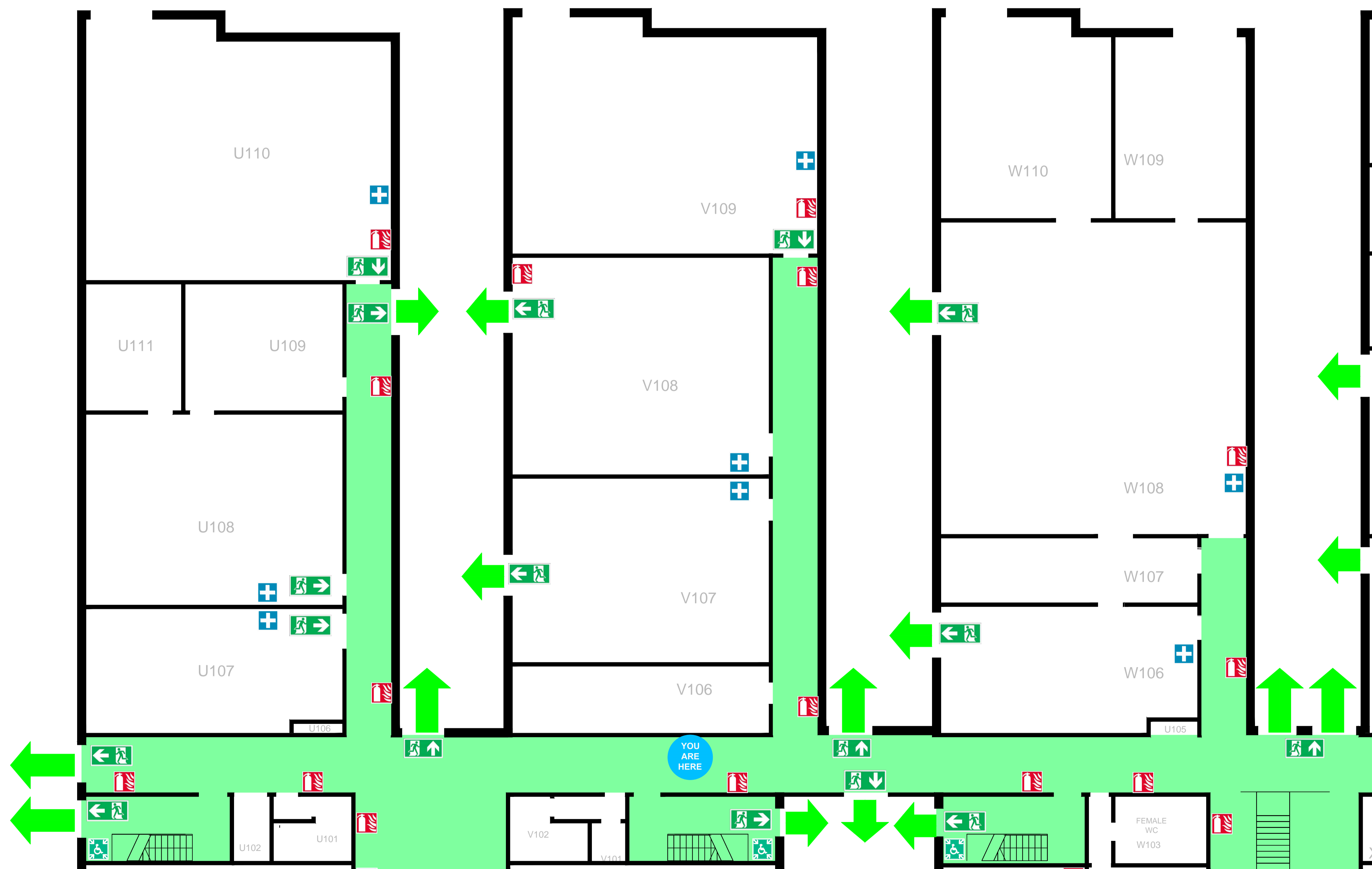
	Title: Eng. First Floor X,Y,Z East	
	Revision	Date
	A	24/06/2015

ON DISCOVERING A FIRE

- Activate the nearest red Break Glass Unit
- To contact the Fire Brigade - Dial 112
- Proceed to the nearest Emergency Exit and report to an Assembly Point
- To contact AIT Emergency Response Team - Dial (087) 111 4444

LOCATION:
ENGINEERING BUILDING
GROUND FLOOR
(Block X,Y,Z East)

EMERGENCY EVACUATION PLAN



FIRE ACTION
 The Fire Alarm Warning is given by a continuous sounding bell tone. Follow procedures below and instructions of Evacuation Marshals and Fire Wardens

EVACUATION PROCEDURE

- Proceed to the nearest emergency exit
- Evacuate the building quickly and calmly
- Close all doors behind you
- Report to an Assembly Point

DO NOT take unnecessary risks
 DO NOT stop to collect personal belongings
 DO NOT run, walk calmly and quietly
 DO NOT use the lifts, use the stairs
 DO NOT re-enter the building until told it is safe to do so.

MEDICAL EMERGENCY
DIAL - 112
 Then, contact AIT Campus Emergency Response Team on (087) 111 4444

GENERAL EMERGENCY
 To contact the Gardai, Fire Brigade, Ambulance: **DIAL - 112**
 To contact the AIT Emergency Response Team: **DIAL - (087) 111 4444**

SYMBOLS

	You are here indicator		First Aid Box
	Emergency escape		Defibrillator
	Direction of escape arrow		Fire extinguisher
	Emergency escape route		Safe Refuge Point

	Title: Eng. Ground Floor U, V, W West	
	Revision	Date
	A	24/06/2015

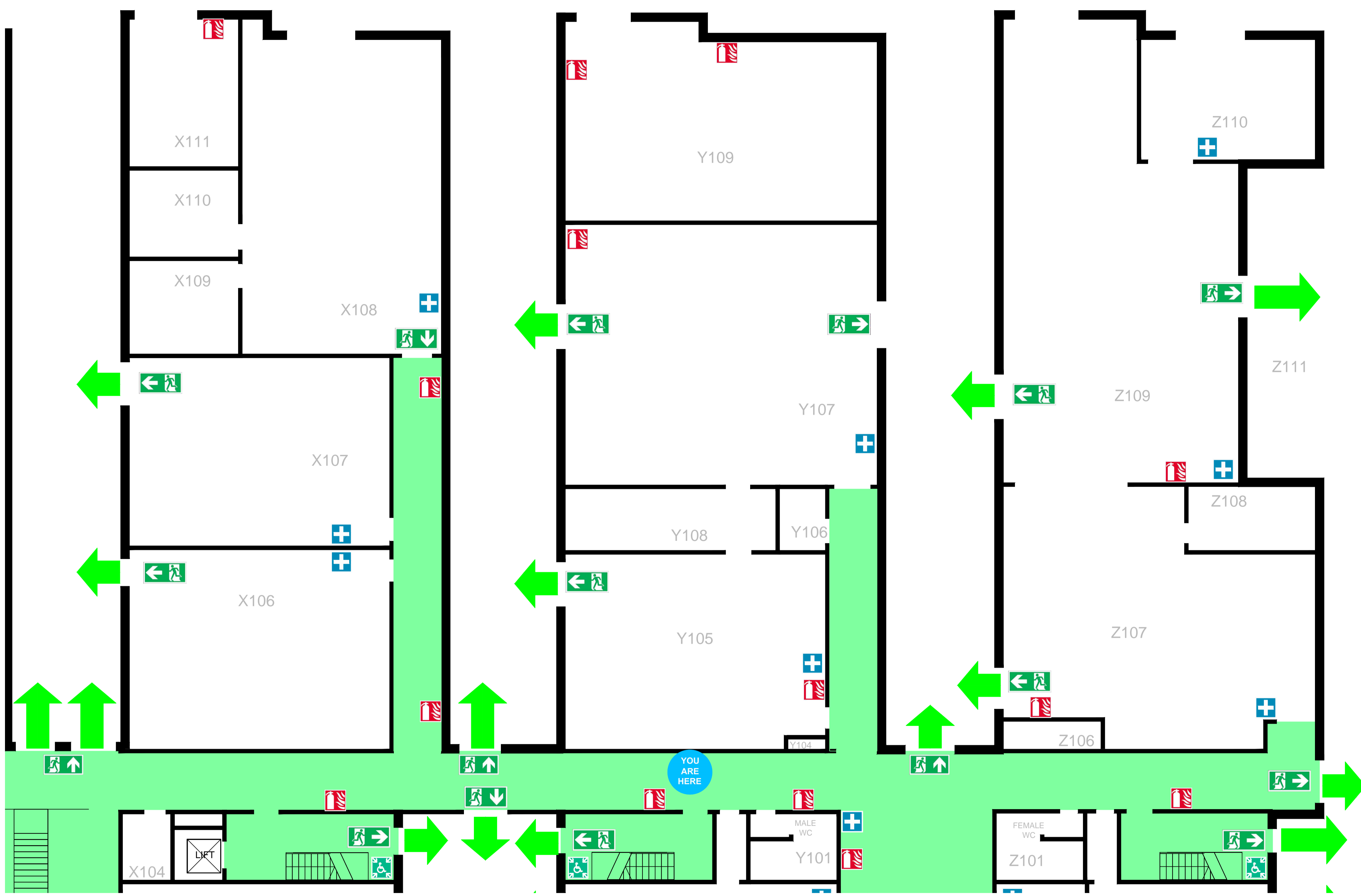
ON DISCOVERING A FIRE

- Activate the nearest red Break Glass Unit
- To contact the Fire Brigade - Dial 112
- Proceed to the nearest Emergency Exit and report to an Assembly Point
- To contact AIT Emergency Response Team - Dial (087) 111 4444

LOCATION:
ENGINEERING BUILDING
GROUND FLOOR
(Block U,V,W West)



EMERGENCY EVACUATION PLAN



FIRE ACTION
 The Fire Alarm Warning is given by a continuous sounding bell tone. Follow procedures below and instructions of Evacuation Marshals and Fire Wardens

EVACUATION PROCEDURE

- Proceed to the nearest emergency exit
- Evacuate the building quickly and calmly
- Close all doors behind you
- Report to an Assembly Point

DO NOT take unnecessary risks
 DO NOT stop to collect personal belongings
 DO NOT run, walk calmly and quietly
 DO NOT use the lifts, use the stairs
 DO NOT re-enter the building until told it is safe to do so.

MEDICAL EMERGENCY
DIAL - 112
 Then, contact AIT Campus Emergency Response Team on (087) 111 4444

GENERAL EMERGENCY
 To contact the Gardai, Fire Brigade, Ambulance: **DIAL - 112**
 To contact the AIT Emergency Response Team: **DIAL - (087) 111 4444**

SYMBOLS

	You are here indicator		First Aid Box
	Emergency escape		Defibrillator
	Direction of escape arrow		Fire extinguisher
	Emergency escape route		Safe Refuge Point

	Title: Eng. First Floor X,Y,Z West	
	Revision	Date
	A	24/06/2015

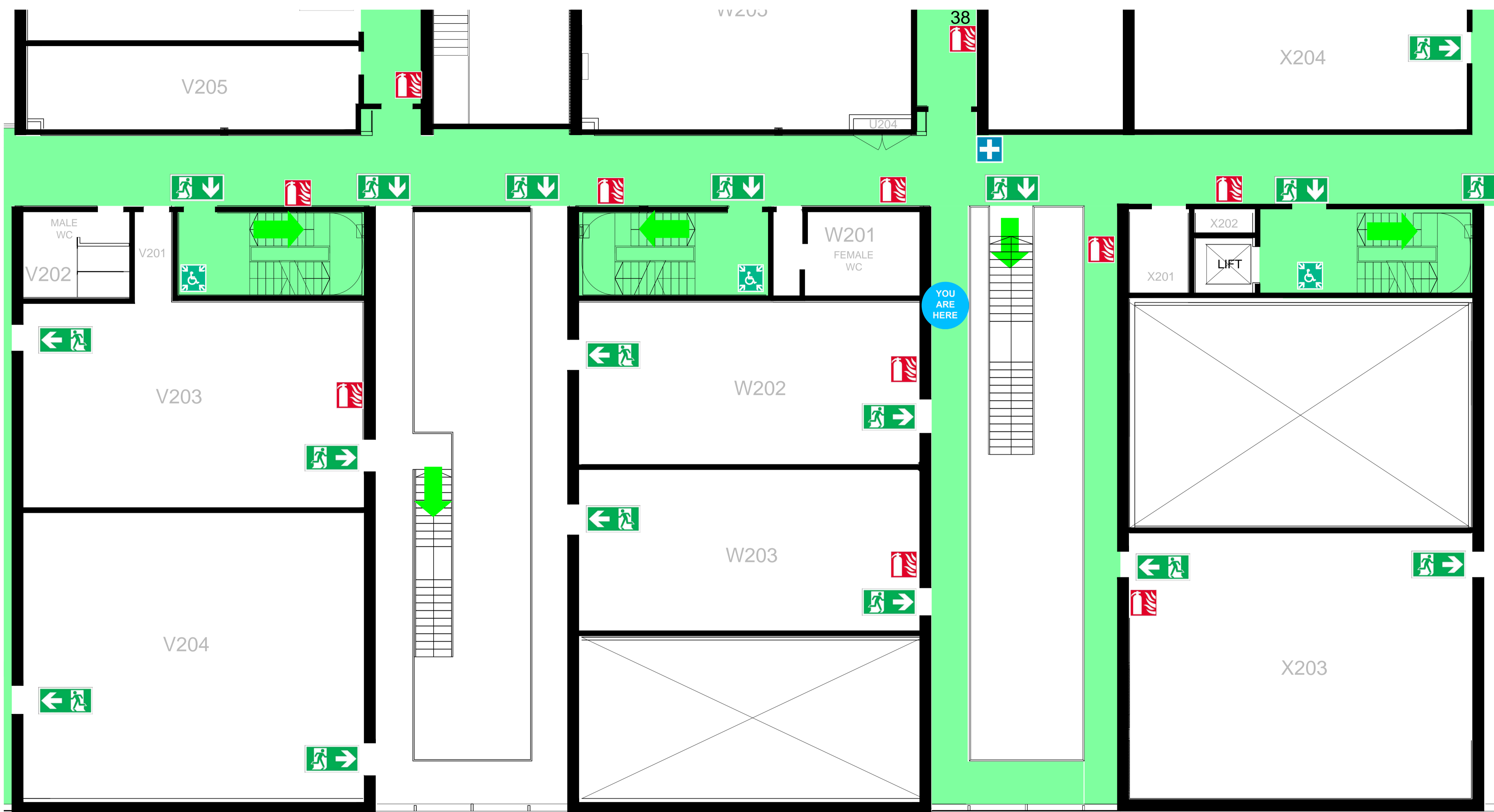
ON DISCOVERING A FIRE

- Activate the nearest red Break Glass Unit
- To contact the Fire Brigade - Dial 112
- Proceed to the nearest Emergency Exit and report to an Assembly Point
- To contact AIT Emergency Response Team - Dial (087) 111 4444

LOCATION:
ENGINEERING BUILDING
GROUND FLOOR
(Block X,Y,Z West)



EMERGENCY EVACUATION PLAN



FIRE ACTION
 The Fire Alarm Warning is given by a continuous sounding bell tone. Follow procedures below and instructions of Evacuation Marshals and Fire Wardens

EVACUATION PROCEDURE

- Proceed to the nearest emergency exit
- Evacuate the building quickly and calmly
- Close all doors behind you
- Report to an Assembly Point

DO NOT take unnecessary risks
 DO NOT stop to collect personal belongings
 DO NOT run, walk calmly and quietly
 DO NOT use the lifts, use the stairs
 DO NOT re-enter the building until told it is safe to do so.

MEDICAL EMERGENCY
DIAL - 112
 Then, contact AIT Campus Emergency Response Team on (087) 111 4444

GENERAL EMERGENCY
 To contact the Gardai, Fire Brigade, Ambulance: **DIAL - 112**
 To contact the AIT Emergency Response Team: **DIAL - (087) 111 4444**

SYMBOLS

	You are here indicator		First Aid Box
	Emergency escape		Defibrillator
	Direction of escape arrow		Fire extinguisher
	Emergency escape route		Safe Refuge Point

	Title: Eng. First Floor V, W, X East	
	Revision	Date
	A	24/06/2015

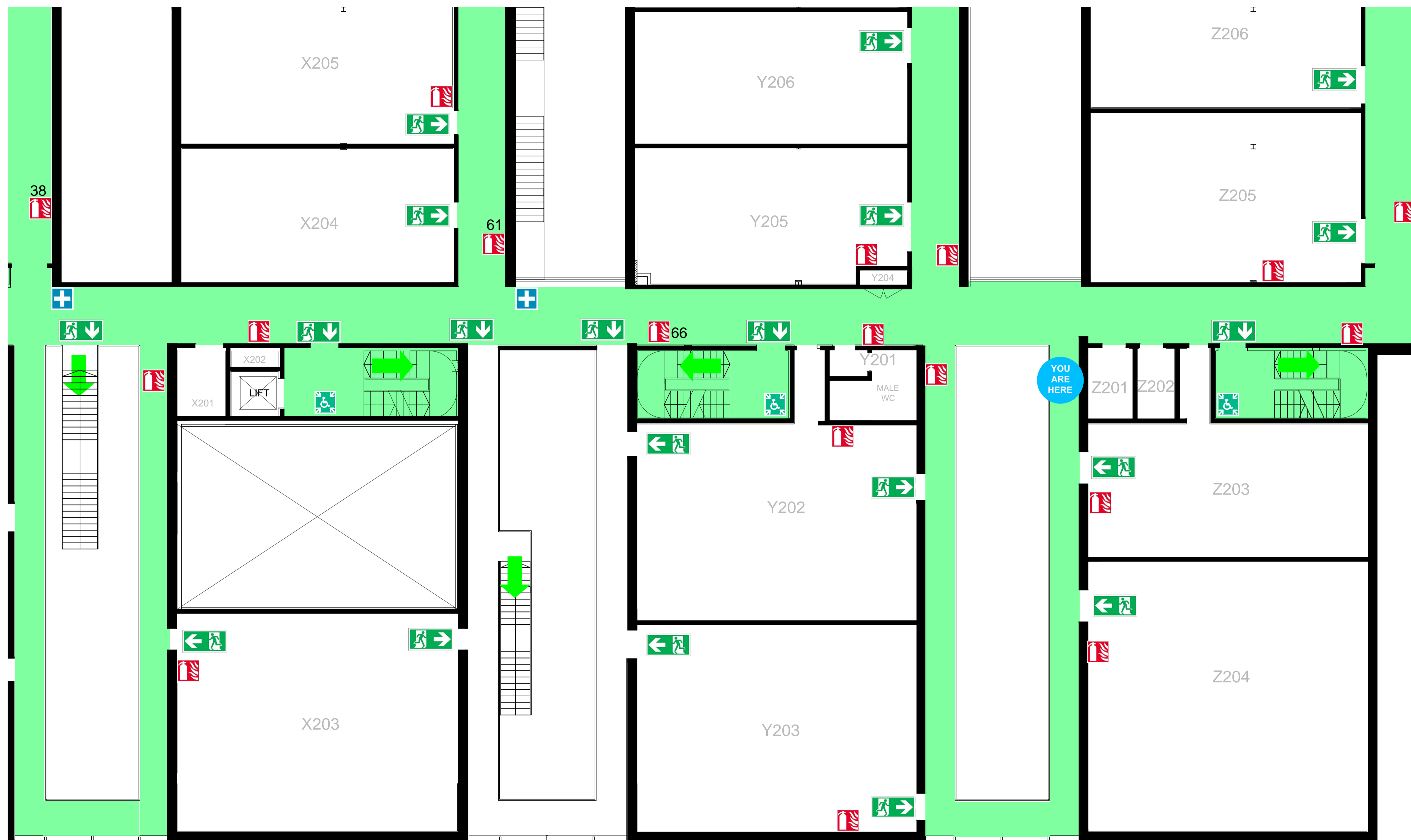
ON DISCOVERING A FIRE

- Activate the nearest red Break Glass Unit
- To contact the Fire Brigade - Dial 112
- Proceed to the nearest Emergency Exit and report to an Assembly Point
- To contact AIT Emergency Response Team - Dial (087) 111 4444

LOCATION:
ENGINEERING BUILDING
FIRST FLOOR
(Block V, W, X East)



EMERGENCY EVACUATION PLAN



FIRE ACTION
 The Fire Alarm Warning is given by a continuous sounding bell tone. Follow procedures below and instructions of Evacuation Marshals and Fire Wardens

EVACUATION PROCEDURE

- Proceed to the nearest emergency exit
- Evacuate the building quickly and calmly
- Close all doors behind you
- Report to an Assembly Point

DO NOT take unnecessary risks
 DO NOT stop to collect personal belongings
 DO NOT run, walk calmly and quietly
 DO NOT use the lifts, use the stairs
 DO NOT re-enter the building until told it is safe to do so.

MEDICAL EMERGENCY
DIAL - 112
 Then, contact AIT Campus Emergency Response Team on (087) 111 4444

GENERAL EMERGENCY
 To contact the Gardai, Fire Brigade, Ambulance: **DIAL - 112**
 To contact the AIT Emergency Response Team: **DIAL - (087) 111 4444**

SYMBOLS

	You are here indicator		First Aid Box
	Emergency escape		Defibrillator
	Direction of escape arrow		Fire extinguisher
	Emergency escape route		Safe Refuge Point

	Title: Eng. First Floor X,Y,Z East	
	Revision	Date
	A	24/06/2015

ON DISCOVERING A FIRE

- Activate the nearest red Break Glass Unit
- To contact the Fire Brigade - Dial 112
- Proceed to the nearest Emergency Exit and report to an Assembly Point
- To contact AIT Emergency Response Team - Dial (087) 111 4444

LOCATION:
ENGINEERING BUILDING
FIRST FLOOR
(Block X,Y,Z East)



EMERGENCY EVACUATION PLAN



FIRE ACTION
 The Fire Alarm Warning is given by a continuous sounding bell tone. Follow procedures below and instructions of Evacuation Marshals and Fire Wardens

EVACUATION PROCEDURE

- Proceed to the nearest emergency exit
- Evacuate the building quickly and calmly
- Close all doors behind you
- Report to an Assembly Point

DO NOT take unnecessary risks
 DO NOT stop to collect personal belongings
 DO NOT run, walk calmly and quietly
 DO NOT use the lifts, use the stairs
 DO NOT re-enter the building until told it is safe to do so.

MEDICAL EMERGENCY
DIAL - 112
 Then, contact AIT Campus Emergency Response Team on (087) 111 4444

GENERAL EMERGENCY
 To contact the Gardai, Fire Brigade, Ambulance: **DIAL - 112**
 To contact the AIT Emergency Response Team: **DIAL - (087) 111 4444**

SYMBOLS

	You are here indicator		First Aid Box
	Emergency escape		Defibrillator
	Direction of escape arrow		Fire extinguisher
	Emergency escape route		Safe Refuge Point

	Title: Eng. First Floor U, V, W East	
	Revision	Date
	A	24/06/2015

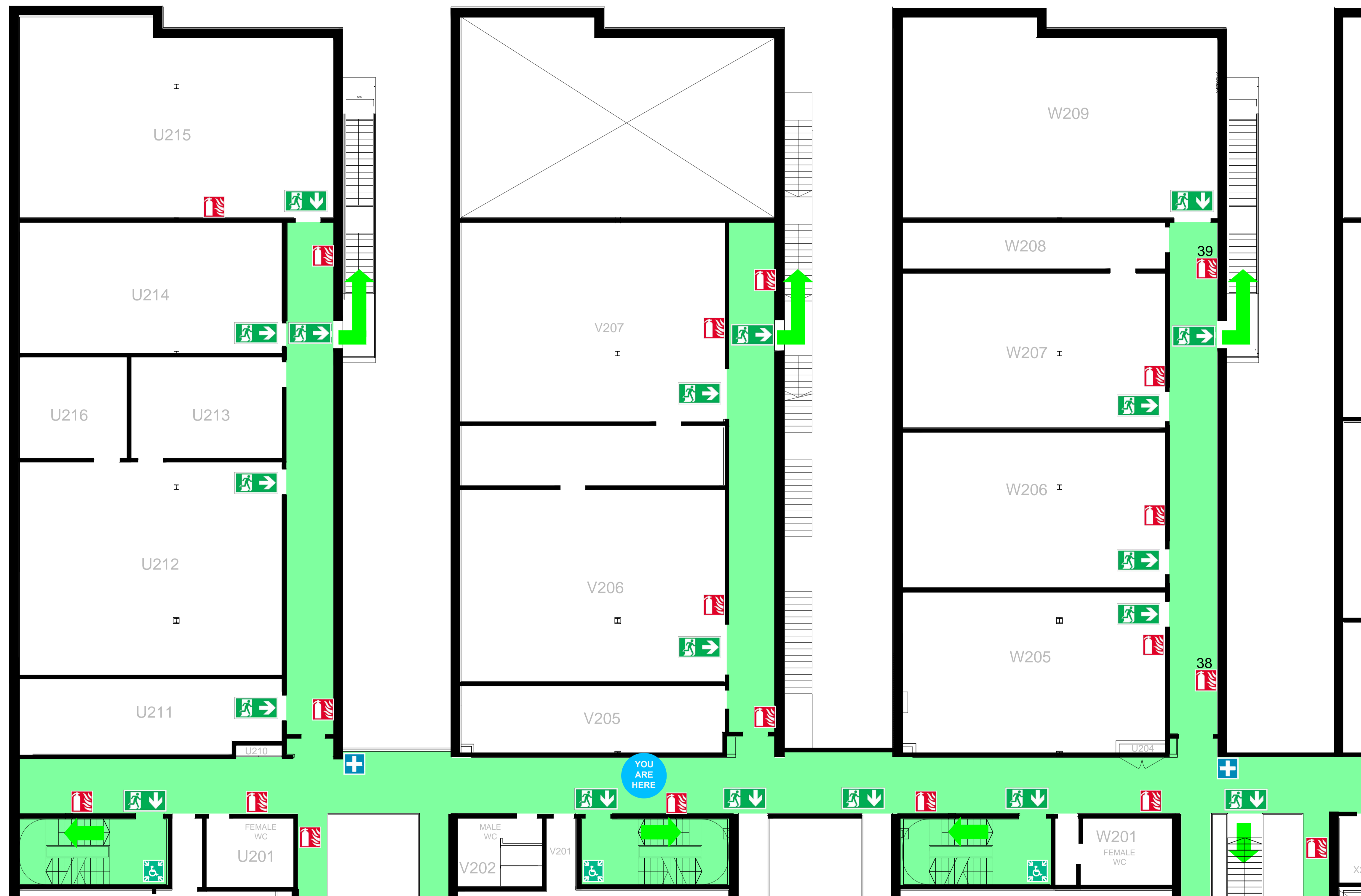
ON DISCOVERING A FIRE

- Activate the nearest red Break Glass Unit
- To contact the Fire Brigade - Dial 112
- Proceed to the nearest Emergency Exit and report to an Assembly Point
- To contact AIT Emergency Response Team - Dial (087) 111 4444

LOCATION:
ENGINEERING BUILDING
FIRST FLOOR
(Block U,V,W East)



EMERGENCY EVACUATION PLAN



FIRE ACTION
 The Fire Alarm Warning is given by a continuous sounding bell tone. Follow procedures below and instructions of Evacuation Marshals and Fire Wardens

EVACUATION PROCEDURE

- Proceed to the nearest emergency exit
- Evacuate the building quickly and calmly
- Close all doors behind you
- Report to an Assembly Point

DO NOT take unnecessary risks
 DO NOT stop to collect personal belongings
 DO NOT run, walk calmly and quietly
 DO NOT use the lifts, use the stairs
 DO NOT re-enter the building until told it is safe to do so.

MEDICAL EMERGENCY
DIAL - 112
 Then, contact AIT Campus Emergency Response Team on (087) 111 4444

GENERAL EMERGENCY
 To contact the Gardai, Fire Brigade, Ambulance: **DIAL - 112**
 To contact the AIT Emergency Response Team: **DIAL - (087) 111 4444**

SYMBOLS

	You are here indicator		First Aid Box
	Emergency escape		Defibrillator
	Direction of escape arrow		Fire extinguisher
	Emergency escape route		Safe Refuge Point

AIT
 ESTATES OFFICE

Title: Eng. First Floor U, V, W West	
Revision	Date
A	24/06/2015

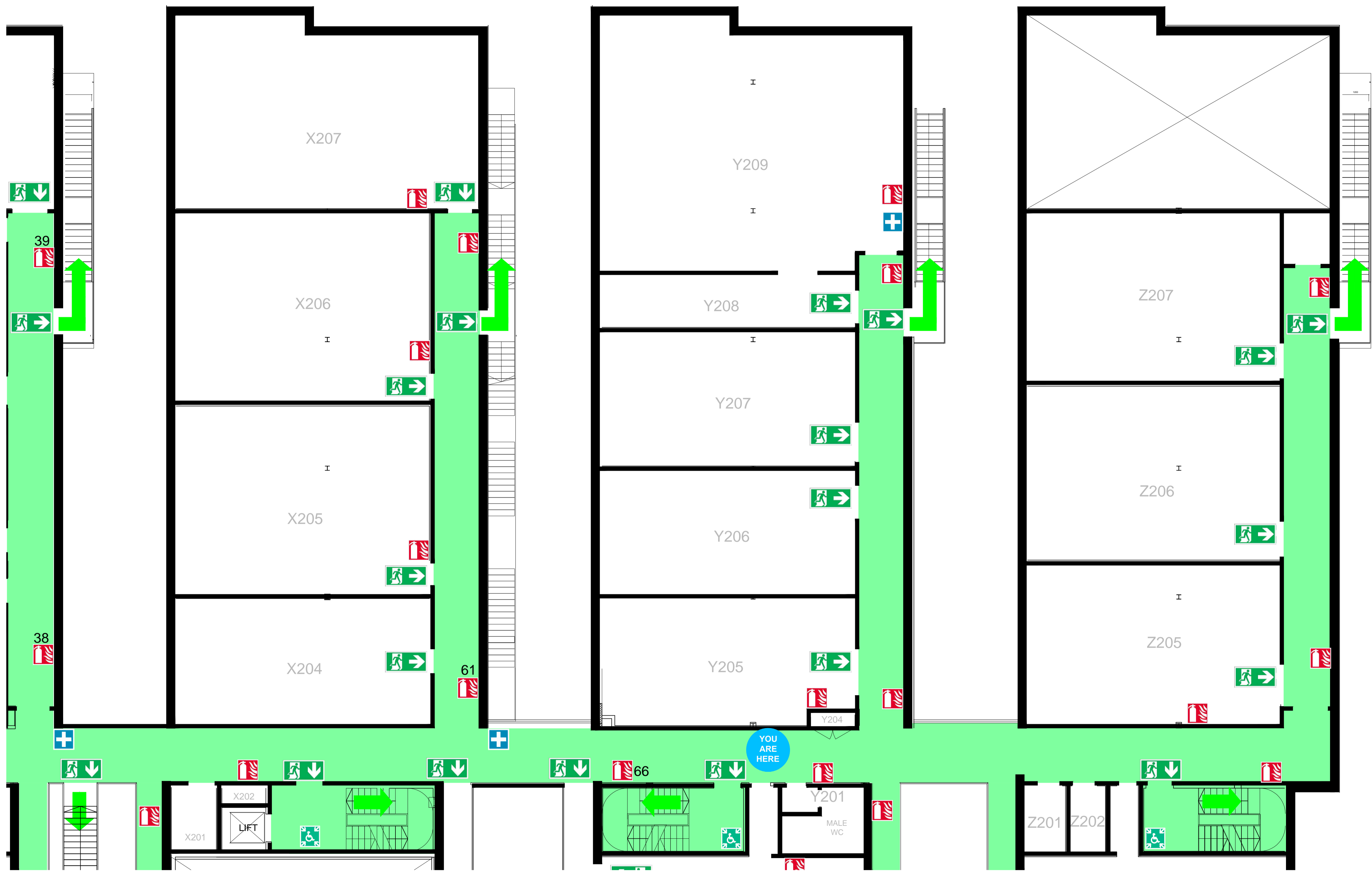


ON DISCOVERING A FIRE

- Activate the nearest red Break Glass Unit
- To contact the Fire Brigade - Dial 112
- Proceed to the nearest Emergency Exit and report to an Assembly Point
- To contact AIT Emergency Response Team - Dial (087) 111 4444

LOCATION:
ENGINEERING BUILDING
FIRST FLOOR
(Block U,V,W West)

EMERGENCY EVACUATION PLAN



FIRE ACTION
 The Fire Alarm Warning is given by a continuous sounding bell tone. Follow procedures below and instructions of Evacuation Marshals and Fire Wardens

EVACUATION PROCEDURE

- Proceed to the nearest emergency exit
- Evacuate the building quickly and calmly
- Close all doors behind you
- Report to an Assembly Point

DO NOT take unnecessary risks
 DO NOT stop to collect personal belongings
 DO NOT run, walk calmly and quietly
 DO NOT use the lifts, use the stairs
 DO NOT re-enter the building until told it is safe to do so.

MEDICAL EMERGENCY
DIAL - 112
 Then, contact AIT Campus Emergency Response Team on (087) 111 4444

GENERAL EMERGENCY
 To contact the Gardai, Fire Brigade, Ambulance: **DIAL - 112**
 To contact the AIT Emergency Response Team: **DIAL - (087) 111 4444**

SYMBOLS

	You are here indicator		First Aid Box
	Emergency escape		Defibrillator
	Direction of escape arrow		Fire extinguisher
	Emergency escape route		Safe Refuge Point

	Title: Eng. First Floor X,Y,Z West	
	Revision	Date
	A	24/06/2015

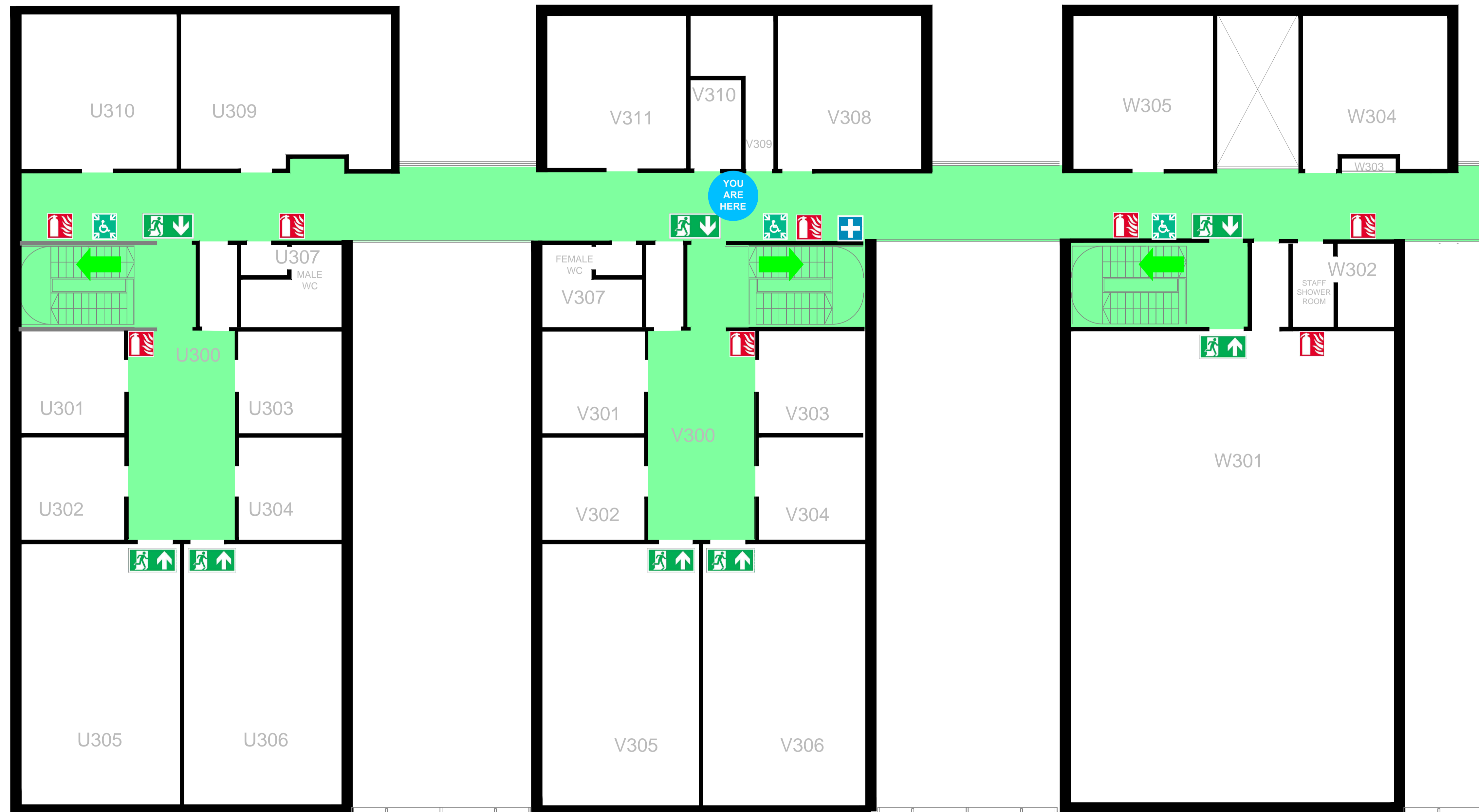


ON DISCOVERING A FIRE

- Activate the nearest red Break Glass Unit
- To contact the Fire Brigade - Dial 112
- Proceed to the nearest Emergency Exit and report to an Assembly Point
- To contact AIT Emergency Response Team - Dial (087) 111 4444

LOCATION:
ENGINEERING BUILDING
FIRST FLOOR
(Block X,Y,Z West)

EMERGENCY EVACUATION PLAN



FIRE ACTION

The Fire Alarm Warning is given by a continuous sounding bell tone. Follow procedures below and instructions of Evacuation Marshals and Fire Wardens

EVACUATION PROCEDURE

- Proceed to the nearest emergency exit
- Evacuate the building quickly and calmly
- Close all doors behind you
- Report to an Assembly Point

DO NOT take unnecessary risks
DO NOT stop to collect personal belongings
DO NOT run, walk calmly and quietly
DO NOT use the lifts, use the stairs
DO NOT re-enter the building until told it is safe to do so.

MEDICAL EMERGENCY
DIAL - 112
Then, contact AIT Campus Emergency Response Team on (087) 111 4444

FOR ALL EMERGENCIES
DIAL - 112
Then, contact AIT Emergency Response Team on (087) 111 4444

SYMBOLS

	You are here indicator		First Aid Box
	Emergency escape		Defibrillator
	Direction of escape arrow		Fire extinguisher
	Emergency escape route		Safe Refuge Point

	Title: Eng. 2nd Floor U,V,W	
	Revision	Date
	A	22/07/14



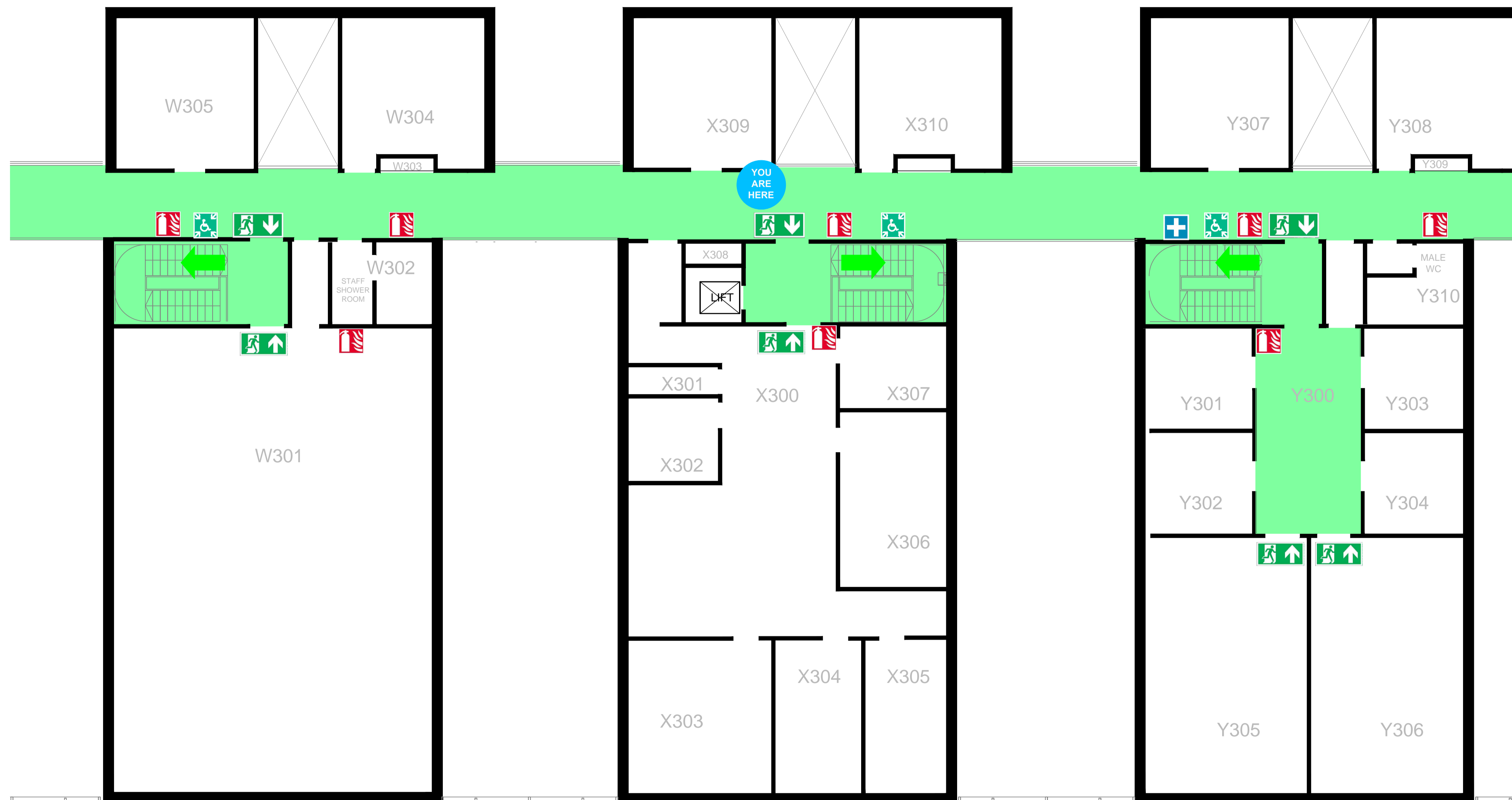
ON DISCOVERING A FIRE

- Activate the nearest red Break Glass Unit
- To contact the Fire Brigade - Dial 112
- Proceed to the nearest Emergency Exit and report to an Assembly Point
- To contact AIT Emergency Team - Dial (087) 111 4444

LOCATION:

**ENGINEERING BUILDING
SECOND FLOOR (BLOCK U,V,W)**

EMERGENCY EVACUATION PLAN



FIRE ACTION
 The Fire Alarm Warning is given by a continuous sounding bell tone. Follow procedures below and instructions of Evacuation Marshals and Fire Wardens

EVACUATION PROCEDURE

- Proceed to the nearest emergency exit
- Evacuate the building quickly and calmly
- Close all doors behind you
- Report to an Assembly Point

DO NOT take unnecessary risks
 DO NOT stop to collect personal belongings
 DO NOT run, walk calmly and quietly
 DO NOT use the lifts, use the stairs
 DO NOT re-enter the building until told it is safe to do so.

MEDICAL EMERGENCY
DIAL - 112
 Then, contact AIT Campus Emergency Response Team on (087) 111 4444

FOR ALL EMERGENCIES
DIAL - 112
 Then, contact AIT Emergency Response Team on (087) 111 4444

SYMBOLS

	You are here indicator		First Aid Box
	Emergency escape		Defibrillator
	Direction of escape arrow		Fire extinguisher
	Emergency escape route		Safe Refuge Point

	Title: Eng. 2nd Floor W,X,Y	
	Revision	Date
	A	22/07/14



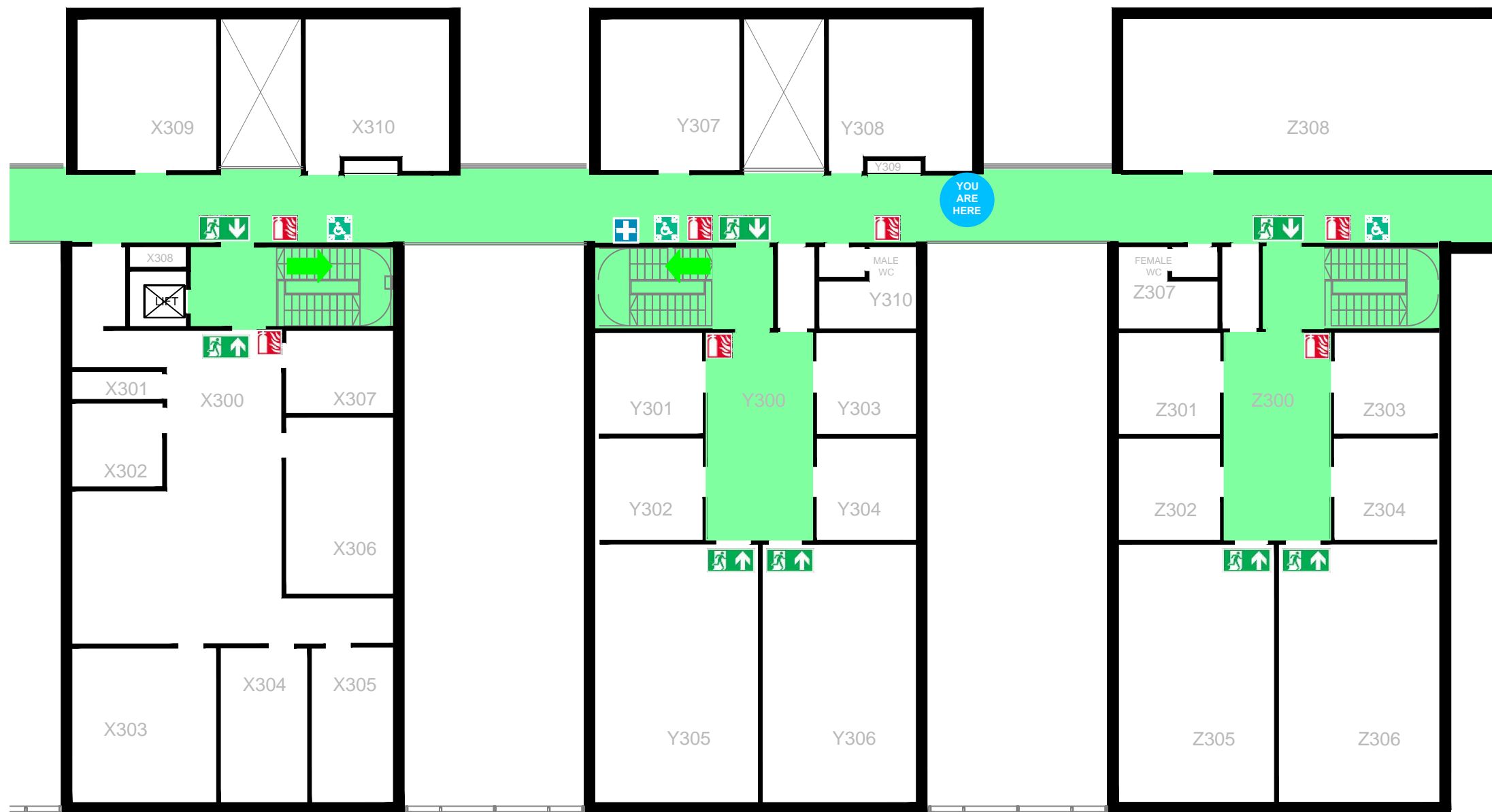
ON DISCOVERING A FIRE

- Activate the nearest red Break Glass Unit
- To contact the Fire Brigade - Dial 112
- Proceed to the nearest Emergency Exit and report to an Assembly Point
- To contact AIT Emergency Team - Dial (087) 111 4444

LOCATION:

**ENGINEERING BUILDING
 SECOND FLOOR (BLOCK W,X,Y)**

EMERGENCY EVACUATION PLAN



FIRE ACTION
 The Fire Alarm Warning is given by a continuous sounding bell tone. Follow procedures below and instructions of Evacuation Marshals and Fire Wardens

EVACUATION PROCEDURE
 → Proceed to the nearest emergency exit
 → Evacuate the building quickly and calmly
 → Close all doors behind you
 → Report to an Assembly Point

DO NOT take unnecessary risks
DO NOT stop to collect personal belongings
DO NOT run, walk calmly and quietly
DO NOT use the lifts, use the stairs
DO NOT re-enter the building until told it is safe to do so.

MEDICAL EMERGENCY
DIAL - 112
 Then, contact AIT Campus Emergency Response Team on (087) 111 4444

GENERAL EMERGENCY
 To contact the Gardai, Fire Brigade, Ambulance: **DIAL - 112**
 To contact the AIT Emergency Response Team: **DIAL - (087) 111 4444**

SYMBOLS

	You are here indicator		First Aid Box
	Emergency escape		Defibrillator
	Direction of escape arrow		Fire extinguisher
	Emergency escape route		Safe Refuge Point

	Title: Eng. Second Floor X,Y,Z	
	Revision	Date
	A	24/06/2015

ON DISCOVERING A FIRE

- Activate the nearest red Break Glass Unit
- To contact the Fire Brigade - Dial 112
- Proceed to the nearest Emergency Exit and report to an Assembly Point
- To contact AIT Emergency Response Team - Dial (087) 111 4444

LOCATION:
ENGINEERING BUILDING
SECOND FLOOR (Block X,Y,Z)

