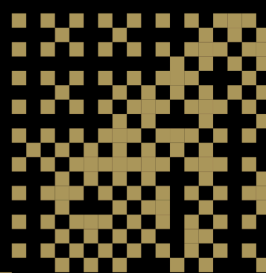


TUS

Technological University
of the Shannon



Global Students Guide 24/25

Contents

1. Welcome & Introduction

President's Welcome
TUS Global Office

2. About TUS

TUS Global Office Welcome
TUS Campuses

3. Next Steps

Accepting your Offer
Supporting Documents
How to Pay
Rejecting your Offer, Deferring your Offer or Withdrawing

4. Before You Arrive

Visa
Insurance
Estimated Cost of Living
Getting to Limerick & Athlone
Accommodation

5. Checklist & Timelines

Pre-Arrival Checklist
Timelines

6. After You Arrive

GNIB
Bank
Phone
Leap Card
PPS Number

7. Practical Information

Student Health Unit
Student Counselling Services
Careers & Employability
TUS Chaplaincy and Pastoral Care
TUS Learning Supports
TUS International Society President Note

8. Ireland

Athlone
Limerick
Clonmel & Thurles

9. Important Numbers & Useful Links

10. Further Useful Information

1.



We welcome international students from more than 100 countries to our six campuses. The richness and diversity of cultures seen on all of our campuses enhance both learning experiences in classrooms and life in the wider University communities. Our international students play a crucial role as we continuously learn from one another and grow together.

Every year we welcome students from all corners of the world and look forward to further growing our presence in new destinations, further contributing to the rich intercultural experience for our students.

Welcome & Introduction

President's Welcome

TUS is not just a new university, but a new type of university.

TUS is vibrant, supportive and welcoming - fusing practical and workplace-based learning with applied research, while staying student centered.

Our next-generation teaching and research will future-proof your career. This benefits you and the communities, regions and societies that we all live in. Our research is focused on fixing problems, getting results and making life better, while our courses are all developed with industry.

Each of our six campuses is diverse, and this diversity unites us as a university community, transcending geography. Smaller class sizes mean you'll be more than just a number, while being part of a new university opens doors for you. Your lecturers will know you, and you will be part of a community. A host of clubs and societies along with outstanding sports facilities all create a fun place to be a student.

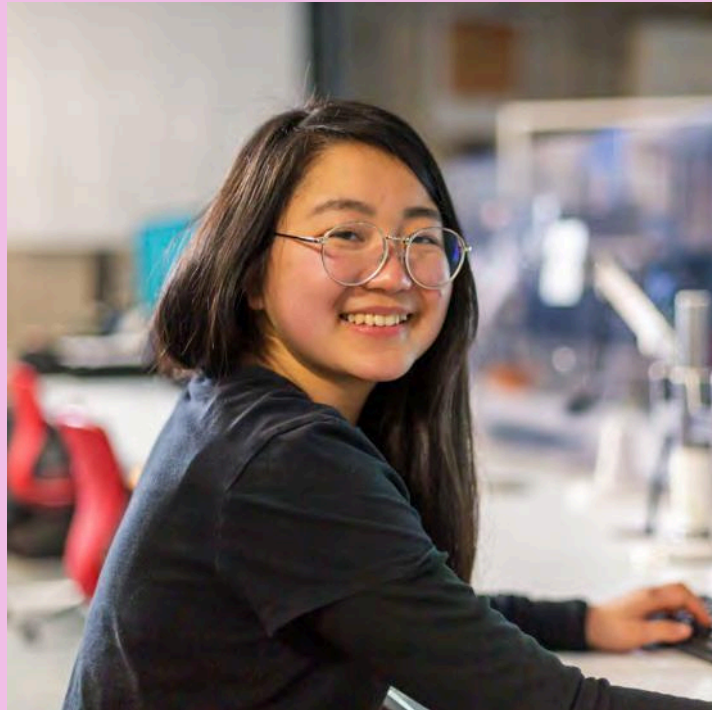
You have opportunities to study abroad through our European University status, or to undertake your work placement overseas through our partnerships with universities and others.

Scientists, engineers, artists, medical and caring professionals, educators, designers, sports people and business people all over the world have begun their journeys with us on our campuses. TUS is the latest incarnation of this ever-changing educational heritage, one that is oriented clearly towards the needs of new generations. TUS is the university for you, for your community, for now and for the future. ***TUS is yours, Come on the journey***



Prof. Vincent Cunnane
President, TUSS





You will find students from **119** nationalities represented across TUS.

Graduates from TUS's **LSAD** have worked on the set of Game of Thrones, worked with Marvel and some have even dressed Beyonce & Lady Gaga.



Research students at TUS have worked with **NASA** and one of their projects was even sent to the International Space Station.

TUS Global Office

The Global Office is the first point of contact for all incoming international students and provides information to students regarding visas, immigration, study abroad programmes and on campus services. Working together with the academic departments and support services across the University, we seek to promote an intercultural environment and are committed to supporting all students of different nationalities and cultures. The Global Office are here to help, providing graduate visa letters, re-entry visa letters and GNIB letters.

You can contact the Global Office at Global@tus.ie

Opening Hours - Athlone & Moylish Campus:
Monday – Friday: 9am – 1PM | 2PM - 5pm | Saturday – Sunday: Closed



Requesting Letters:

You can request letters by emailing Global@tus.ie. You should allow at least 3 working days for letters to be issued. You do not need to request a letter for your immigration registration on arrival, these will automatically be issued to you in the coming weeks

2.



About TUS



Six Campuses

TUS encompasses six campuses across four counties - Westmeath, Limerick, Clare & Tipperary, promoting equality of access and opportunity for all students



15,000 Students

TUS has a student population in excess of 15,000 students. These students will be equipped with the skills and knowledge required for the modern workforce.



250+ Global Partnerships

With more than 250 global partnerships, TUS provides students with a global experience through Erasmus and study abroad placements

The TUS Global Office Welcome

Congratulations! You have made a major step forward in your career by applying for a programme here at the Technological University of the Shannon.

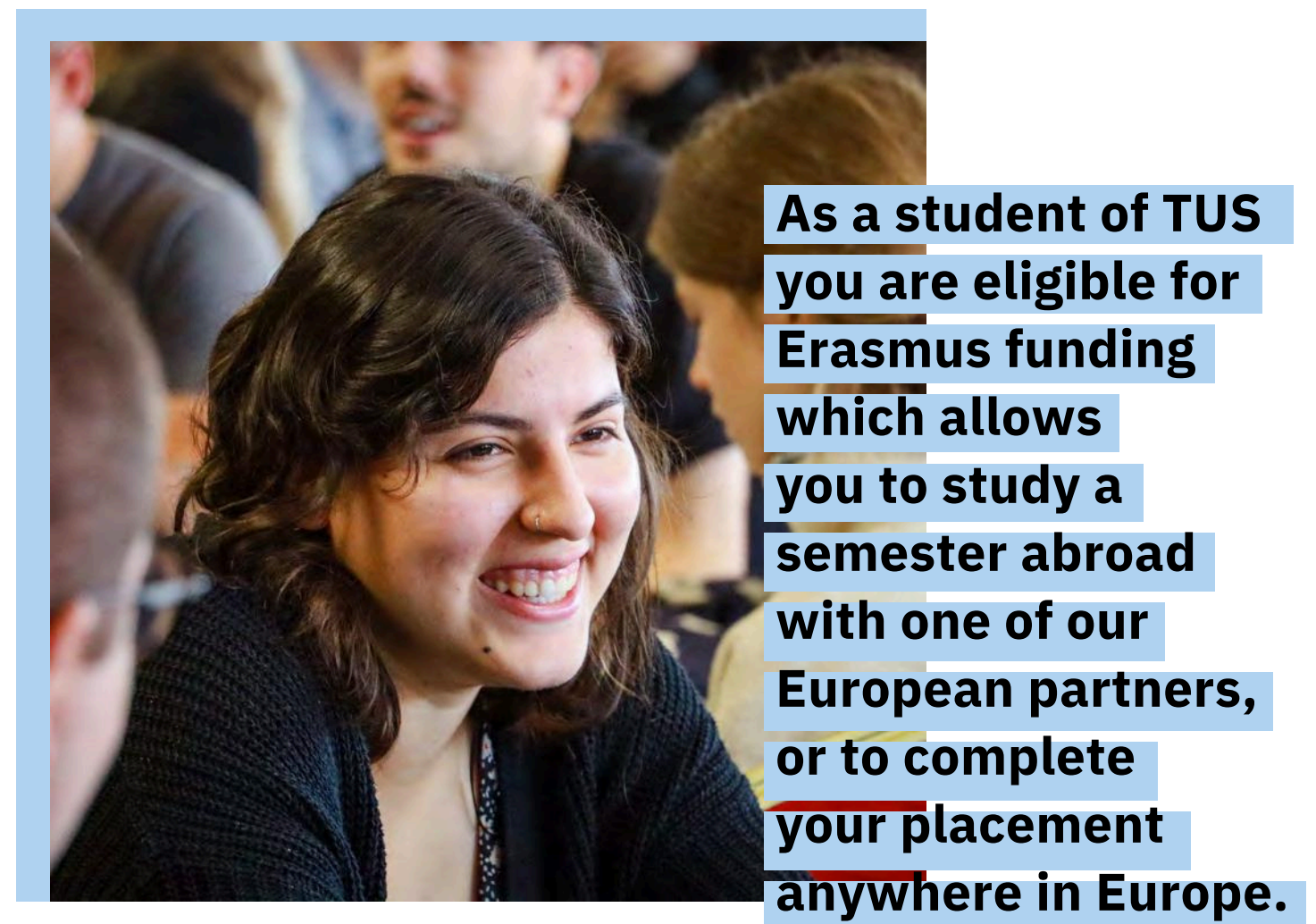
As a student of TUS, you'll be taking your first steps in what will be a rewarding and inspiring journey. We offer an enriching educational experience in each one of our campus locations, with inclusivity and innovation at the heart of everything we do. When you join us, you'll become part of our diverse community, alongside students from all corners of Ireland and the world, and you'll find a warm and friendly atmosphere at every turn.

Small class sizes and our student-first approach means you'll get to know your classmates and lecturers quickly and easily in a relaxed environment. No matter which campus you choose, you will thrive in a positive university atmosphere that will bring you another step closer to an exciting career, whichever course you choose.

As a student of TUS, you will gain invaluable knowledge and expertise through industry-relevant placements and live projects, ensuring your qualification is relevant now and into the future. This emphasis on applied learning, a key difference between TUS and a traditional university, means that you will be work-ready as an outcome of your course and able to hit the ground running come graduation.

The future is yours.

Best Wishes,
TUS Global Office



TUS Campuses

THE MIDLANDS

ATHLONE - Athlone Campus

Located just a stone's throw outside the town of Athlone, our Athlone campus is home to 6,000 students and is renowned for its warm, friendly and inclusive campus culture, which supports students in reaching their full potential. The campus offers 200 industry-focused courses ranging from higher certificate right through to PhD and beyond. Students can expect to find exciting courses in areas like virtual reality and gaming, cybersecurity, veterinary nursing, robotics, digital marketing, and pharmaceutical science, to name but a few.

With an enduring reputation for world-class athletics and state-of-the-art facilities, our Athlone campus is the natural home for students looking to accommodate both sporting and academic needs. Our state-of-the-art International Arena opened in 2013 to widespread acclaim and contains the country's first international-standard indoor athletics track.



THE MIDWEST

LIMERICK - Moylish Campus

Our Moylish Campus is located on the outskirts of Limerick city and is the largest of our midwest campuses.

Located in the shadow of the world-renowned Thomond Park, home to Munster Rugby, and a short walk from the TUS Gaelic Grounds, more than 6,000 students study in the three faculties represented on campus. The campus offers a rich array of sporting, cultural and educational events and facilities, and has an outstanding record of achievement across all faculties.



LIMERICK - Limerick School of Art & Design

LSAD comprises of the Clare Street, Georges Quay and Merriman Houses campuses. It is based in Limerick's city centre and is home to our internationally renowned Limerick School of Art & Design (LSAD). LSAD is one of the most significant providers of art and design education in Ireland. Students have access to excellent workshop, studio and exhibition facilities where they learn from leading art and design practitioners and where their education is informed by the latest developments in the wider world of art and design.

Watch as **Deborah Gao** gives us insight into a day at the Clare Street Campus!



COUNTY TIPPERARY

TUS Tipperary campuses are based in Thurles and Clonmel.

Thurles Campus

Thurles is a vibrant town and is a great, central location in which to live and study. Well serviced by the Irish Rail network and growing its reputation as a college town, Thurles has many cultural and recreational facilities, from the Source Arts Centre and Theatre to a well-equipped leisure centre, multiscreen cinema complex, and a modern shopping centre. Thurles is synonymous with the GAA and in Liberty Square is the famed Hayes Hotel, which held the first historic meeting of the GAA in 1884, while the renowned Semple Stadium, the spiritual home of hurling, is situated a stone's throw from our Thurles Campus.



Digital Campus Clonmel

Our Digital Campus Clonmel is situated in the south of the county in the heart of the Golden Vale. With a population of almost 20,000, Clonmel has numerous cafés, restaurants and lively pubs, and offers plenty of amenities for students living locally. If you enjoy the great outdoors, Clonmel is perfectly located in a valley surrounded by mountains and hills including the Comeraghs and Slievenamon. After a hard day's work in college, enjoy the beautiful Suir Blueway Tipperary, with 21km of the 53km route accessible by bike or foot. You can follow the towpath from Clonmel to Carrick on Suir and take in the superb scenery along the route. There are watersport activities at various points along the river.



3.



Next Steps

Contact us at any stage throughout your application journey at **Global@tus.ie** We can answer any queries you have or arrange a call back/teams call to talk through the process further.

ACCEPTING YOUR OFFER:

NONEU Students - Once you receive your offer from us you will need to accept or decline your offer by emailing Global@tus.ie

To secure your place on your course of choice you will have 30 days after receiving your offer to email Global@tus.ie and accept your place and pay your deposit. Your place on the course is not secured until this deposit has been received:

- Students studying an **undergraduate programme** are required to pay a **€500 deposit**
- Students studying a **postgraduate programme** are required to pay a **€1000 deposit**

This deposit will be deducted from your overall tuition fee and your balance should be paid in full before travelling to Ireland to begin your studies.

SUPPORTING DOCUMENTS:

If you have received a conditional offer letter this means you have been offered a place based on certain conditions being met, once these are met you will obtain your full offer letter:

- English Language Requirement:** Evidence that you have met the required English Language level should be received by the TUS Global office no later than July 1st.
- Academic Transcripts:** Evidence of your High School results, foundation programme results, degree results should be submitted as soon as received by you.

HOW TO PAY:

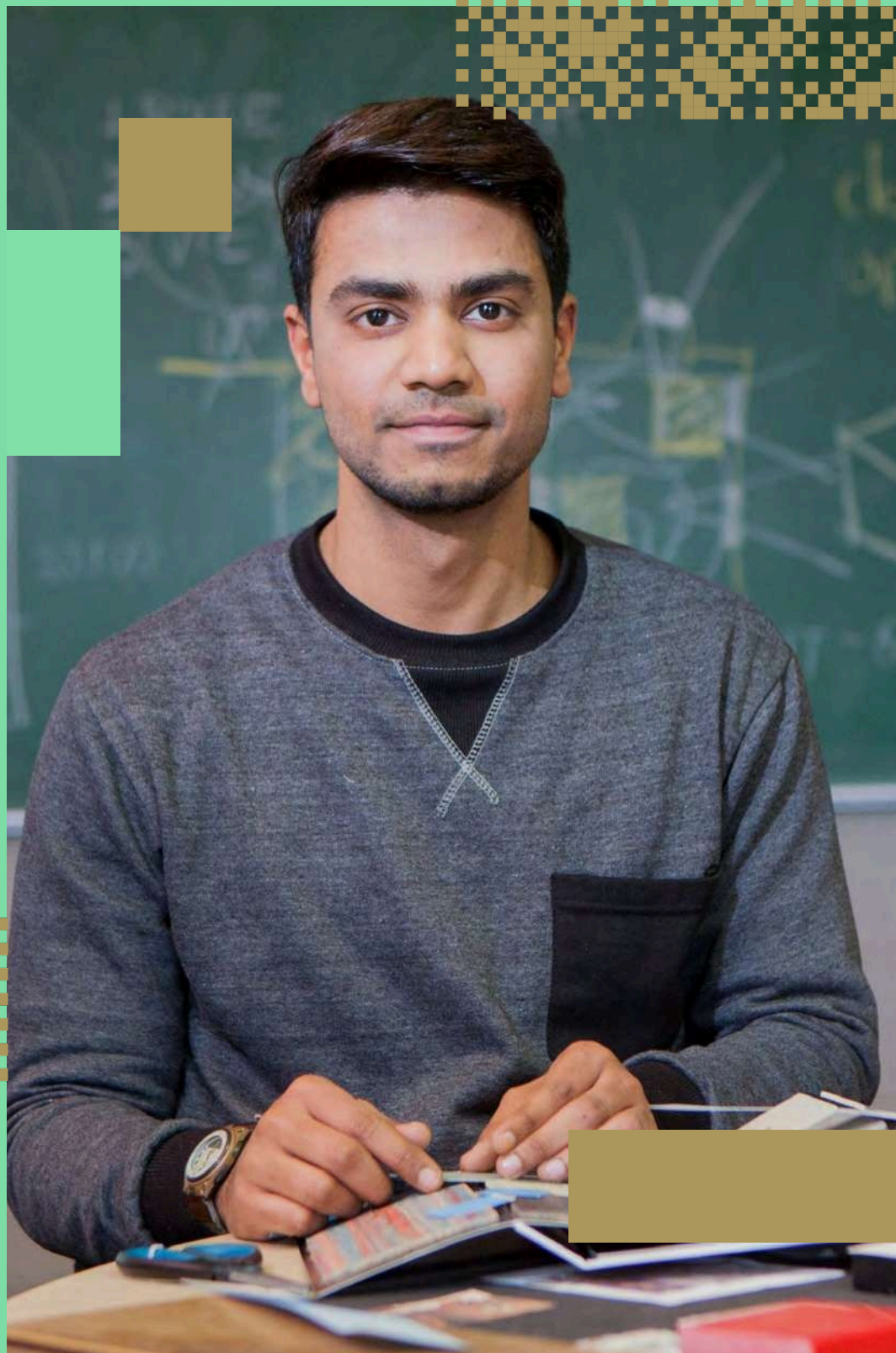
TUS recommends using Flywire to make payments: Limerick & Tipperary Campuses - tus.flywire.com Athlone Campus - tusathlone.flywire.com. When you use Flywire your payment can be tracked which means TUS can confirm receipt of your payment much quicker than through other methods. Benefits of using Flywire can be found [here](#). You can contact Global@tus.ie for further details on this. ***Please ensure when making payment you quote your application reference number and your full name as used in your application.***

REJECTING AN OFFER, DEFERRING YOUR OFFER OR WITHDRAWING:

If you wish to reject your offer you should send confirmation to Global@tus.ie. If you wish to defer your place a request can be sent to Global@tus.ie – these requests will be approved on a case-by-case basis.

Deferrals can only be considered on applications where a student has secured their place on the programme by payment of a deposit. Deposits are non-refundable. The only instance where the fee paid will be refunded in full (minus a€150 administration charge) is where a student fails to meet the academic conditions outlined in their conditional offer, a student visa is refused or an issue arises that relates to a medical illness. Students will need to provide supporting documentation in any of the aforementioned cases. ***Please note – Students withdrawing from their programme 6 weeks after the programme start date will not be eligible for a refund.***

4.



Have you joined one of the incoming **TUS student WhatsApp** groups? Reach out to us on Global@tus.ie where we will send you information on how to join

Before You Arrive

VISA:

Many non-EU students need to apply for a visa to the Embassy of Ireland or the Consulate in their home country. This can take 6-12 weeks, so it is important to allow plenty of time for this when planning for your admission date and to make visa applications well in advance of the start of your course. It is the responsibility of students to arrange their own visas.

Students may not be able to start at TUS if their visa is delayed. For complete details of visa requirements and processes, please visit the Irish Naturalisation & Immigration Service website: »<http://inis.gov.ie/>

INSURANCE:

All students studying in Ireland must acquire medical insurance. Please visit »[here](#) for details of Medical Insurance Suppliers in Ireland.

ESTIMATED COST OF LIVING:

*Please note the below are approximate figures

- Accommodation: €600 per month (including utilities)
 - Immigration Registration (GNIB): €300 (paid once per year)
 - Health Insurance for first year: €150-€200
 - Health Insurance after first year: €190 - €686 (age dependant)
 - Food: €200 per month
 - Social Life: €100 per month
- For a student studying for 12 months the average living cost is: €15,000



GETTING TO ATHLONE & LIMERICK:

Limerick:

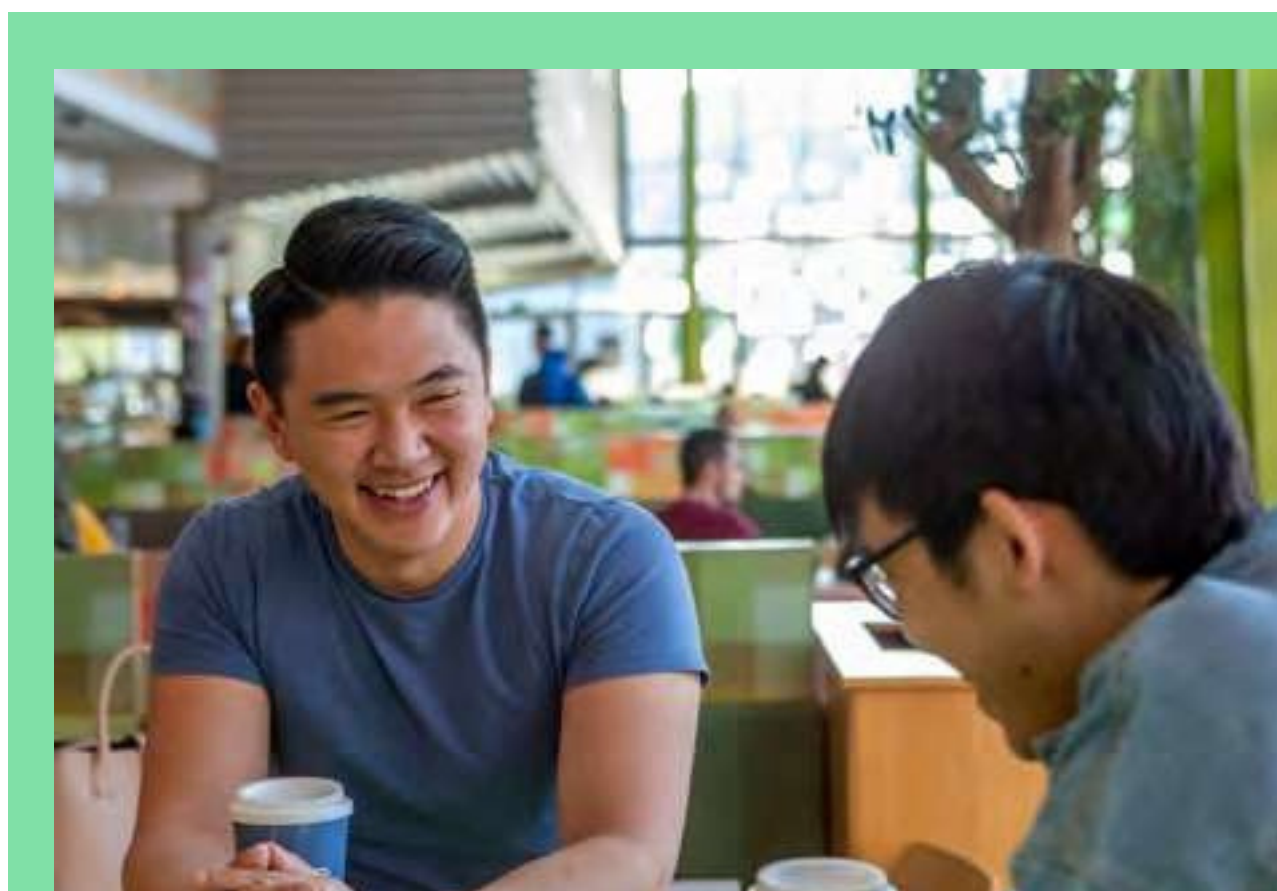
Ireland has 3 International airports – Shannon, Dublin & Cork. TUS offers a free pick-up service for students arriving to Shannon International Airport on any day and at any time for students studying at the TUS Moylish and LSAD Campuses.

In order to avail of this service students should complete the **Arrival Form**. This should be completed as early as possible and students should give at least 14 days' notice of their arrival.

TUS will also offer free transfers from Dublin airport on dedicated days. These weekly Dublin Pick Up days will be communicated to you through email.

Bus Services from Dublin Airport to Limerick:

- **Eireagle** - eireagle offers 10 daily departures from Dublin Airport direct to Limerick.



Athlone:

TUS provides transport on designated days for all new students from Dublin airport to TUS Athlone Campus. In order to avail of this service students should complete the **Arrival Form**. This should be completed as early as possible and students should give at least 14 days' notice of their arrival. However, there are a number of buses and trains travelling from Dublin to Athlone each day. All buses and trains can be booked online, reduced web fares apply.

Bus services to Athlone from Dublin Airport:

- **Citylink 763** - The drop off points for Citylink buses are TUS Athlone campus and B&Q store Coosan, Athlone.
- **Aircoach** - Dublin Airport to Galway (route 706/X) - drop off points are TUS Athlone campus and B&Q store Coosan, Athlone.

TUS will organise weekly pickups from Dublin Airport on designated days. The International Office will send communication on these dates throughout July and August.

Please note - All students should confirm their move in day with their accommodation provider before booking their flights to Ireland.

ACCOMMODATION:

TUS does not offer on-campus accommodation. However, we do have a number of student accommodation providers that we work closely with:

Athlone Campus:

An abundance of close, convenient, well cared-for accommodation within Athlone, makes house-hunting easy for new and current students. Glen Abhainn Students Apartments, Heatherview Court, Croi Oige Student Apartments, Wellmount Student Apartments, Gate Lodge Student Apartments are all within 5-10 minutes walking distance of the Athlone campus.

Students generally live within close proximity to the University as there are a large number of student houses, student apartments and self-catering accommodation facilities available within 5 - 15 minutes' walk of the campus.

The International Office in association with the Students' Union Accommodations Officer will assist international students in their search for accommodation.

The Students' Union office provides lists of houses, apartments, self-catering and host family accommodation. Check the Students' Union list of available accommodation through their [website](#).
It is advisable to book student apartments by emailing the manager of the student apartment prior to arrival in Athlone.

Moylish Campus:

»Thomond Student Village

Just a short walk from campus, buses run throughout the day from the village to campus.

»Cratloe Student Village

Just a short walk from campus, buses run throughout the day from the village to campus.

LSAD Campus:

»Grove Island

Just a short walk from our LSAD campus.

»Parkville

Just a short walk from LSAD campus.

Clonmel & Thurles:

TUS work with a trusted network of landlords who provide high quality accommodation adjacent to our Tipperary campuses to our students each year. Please contact international@tus.ie for further information on available housing.

House Shares:

There are house share options available for students who are studying at any of our campuses. You will find an accommodation section on our [website](#).

TUS will regularly update students through email on accommodation options for all campuses during the application process. Please be sure to engage with these emails, and make your booking early, and prior to arrival

Please note: Students should exercise caution when booking accommodation. Do not hand over/send any money to landlords until you are sure it is legitimate. You should also make sure to get a receipt for any deposit/rent paid.

5.



Useful Tips!

- Ireland uses the Euro currency €€
- For Ireland the associated plug type is G, which is the plug that has 3 rectangular pins in a triangle pattern
- If calling from abroad - all numbers should be pre fixed with 00 353 (drop the first 0 of the local code)

Checklist & Timelines

Pre Arrival Checklist

- Plan your journey – book your flights and plan transport to TUS if not arriving on allocated pick-up days.
- Make sure to inform TUS of your arrival details & accommodation 14 days prior to travel through **Arrival Form**
- Confirm arrival time and date with your accommodation provider.



Passport



Medical Supplies - Medical information translated into English if you will need a regular prescription or consultations



Re-usable Face Masks & Hand Sanitiser - it's always better to be safe when travelling!



Raincoat/Warm clothing - Check the weather so you can be prepared - <https://www.met.ie/>



Home Comfort Food - this will help with potential homesickness - more on that below!



Unblocked Mobile Phone - and travel adapters so you can charge it!!



Printed Documentation:

- TUS Offer Letter
- Proof of medical insurance
- Recent bank statement

Read about how Harshali Jagtap from India learned to adjust to the Irish climate [here](#).

TIMELINES:

21 days after offer: You should have paid your deposit to secure your place on your course, please note that there is no guarantee that your place will be secure until this is received.

June 1st: If coming from a country where a visa is required to enter Ireland you should have your full fee paid by this date to ensure you have enough time for the visa process. You should also purchase your health insurance at this point.

June: Students from visa countries should begin their visa process in June to ensure they have enough time for the full process. Ensure all outstanding documents have been received by TUS e.g. English Language Test, Transcripts etc.

June/July: Source & finalise accommodation.

August: Book flights & complete your arrival form. At this time you should also ensure you have checked everything off on your pre-arrival checklist.

Before Start Date: Travel to Ireland to ensure you are here in time to begin classes in September and attend Orientation.

September: Begin your future at TUS!

The TUS Academic Calendar is included at the end of this document - it will provide you with start dates for your individual programme. It will also give you an overview of the upcoming year - exam weeks, days off, holidays etc.

6



After You Arrive

Homesickness and Culture Shock

Some students will experience culture shock or homesickness while abroad. You might be surprised to feel Homesick in the first few weeks, however it is completely normal! It's part of the journey and it will pass.

Homesickness can be due to a number of “stressors”, such as:

- Adjusting to new customs, food, language, people
- Language issues with many different accents
- Missing relationships back home
- Absence of home comforts
- Feeling isolated

The best advice is to remember to rest, eat and sleep at the beginning of your experience as when you are tired all feelings and emotions are intensified. Create a balance between academic work and social life and keep an open mind.

Read about our students experience with arriving in Ireland and adjusting to their new world below:

- **Arin from Indonesia**
- **Pei from Malaysia**
- **Italo from Mexico**
- **Florangela from Peru**

GNIB/Irish Residence Permit:

All non-Irish nationals, who are not citizens of the EU/EEA must register in person with the Garda National Immigration Bureau (GNIB) within 90 days after arrival and after completion of registration at your third level institution. The GNIB will issue you with a residence permit/IRP card. All International students will be given a GNIB letter and appointment from the International Office. You will be required to renew your GNIB/IRP each year you are studying in Ireland (Don't worry - the Global office will arrange your first appointment once you arrive) For your GNIB appointment you will be required to bring:

- Valid Passport
- Letter of Confirmation from TUS
- €300 fee (must be paid with a Debit/Credit card)
- Evidence of Private Health Insurance
- Evidence of Accommodation
- Evidence of Financial Support (Bank Statement etc.) for students from non-visa countries

BANK:

To open a bank account within Ireland, students will need to have proof of ID and proof of address. The International Office will then advise you on how to go about setting up a bank account.

PHONE:

There are many options of sim cards/phone providers in Ireland - Vodafone, Three, 48 - all offer 'pay as you go' plans for €20 per month, for which you will receive the 'unlimited package' - unlimited calls, texts and data. We advise students to get their phone 'unblocked' ahead of traveling to Ireland.

LEAP CARD:

The Student Leap Card is the national student travel and discount card. The card saves students money on public transport services as well as selected retail brand partners. Students can apply online and collect their card from one of their **nominated agents. You will need your student card as proof of your student status.** A leapcard is required to avail of student rates on Irish Rail & Bus Eireann

PPS NUMBER:

While in Ireland you can work part time during your studies & full time during summer and Christmas Holidays. To work in Ireland you will require a PPS number. The PPS office will require a Job offer letter in order to issue you with a PPS number.

The TUS Global Office can issue you with a letter to confirm your student status for your PPS application, but please note that you will also need a letter from your prospective employer for this application.

7.



You can find further information on TUS's Student Services - and more practical Information in the **TUS Student Handbook 2024.**

Practical Information

STUDENT HEALTH UNIT

We provide confidential, professional on-campus medical and nursing care for registered students. Our service is nurse-led and provides comprehensive health services and emergency care as well as health promotion and supportive measures to help you in ways that will enable you to stay focused and committed to your studies. Doctors are available to all students within 3km of the campus location. Student health services are available from Monday - Friday throughout the academic year. Nurse services are free of charge and doctor appointments are subsidised costing €15 for students. For further information or to make an appointment:

Student Health: Athlone Email: nurses.midlands@tus.ie Tel: 09064 68063

Student Health: Limerick/Tipperary

Email: nurses.midwest@tus.ie. If you have a chronic condition, disorder or disability which may require specific support or monitoring please inform the University Nurse as soon as possible after registration so appropriate care can be planned. Your health records are not shared without your consent, nor do they form part of your academic record. When you register with the TUS student health service, you will need to provide an Irish mobile phone number as well as the address and Eircode of your student accommodation.



STUDENT COUNSELLING SERVICES

Our Student Counselling Service offers a professional confidential psychological counselling service which is FREE to registered students, and is staffed by highly qualified and experienced psychologists, psychotherapists, and counsellors. When a personal issue or crisis arises and is affecting your wellbeing, happiness, capacity to cope, relationships or learning, we can provide you with accessible, available and student-friendly support.

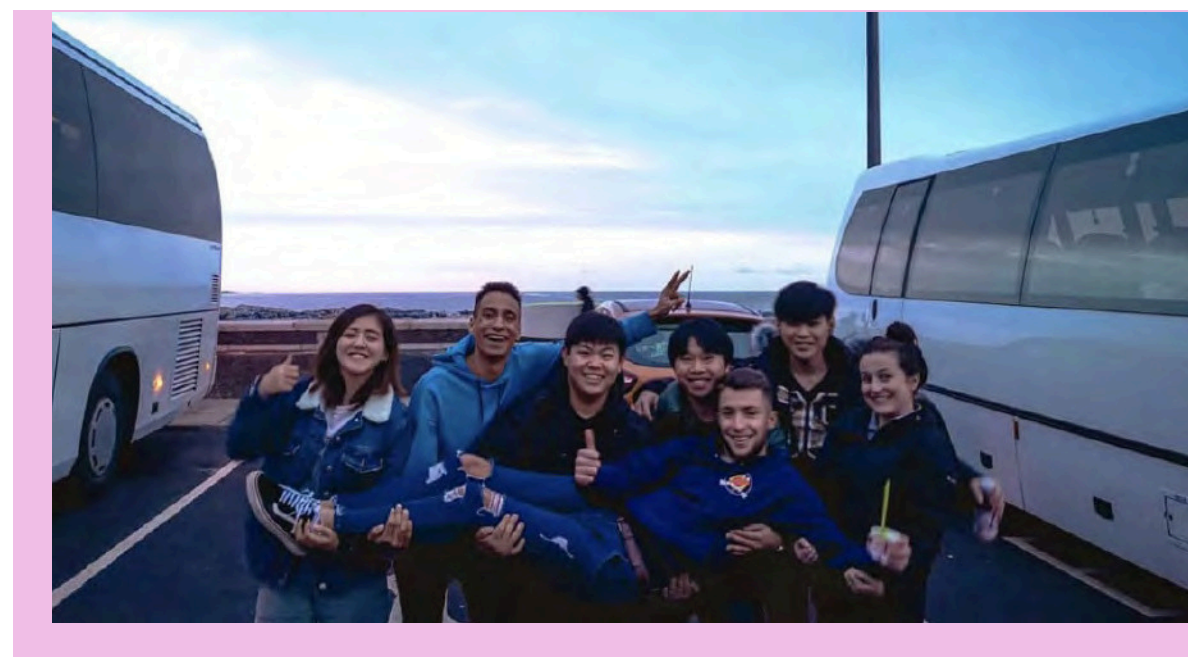
Further information:

Student Counselling: Midlands (Athlone)

Email: counselling.midlands@tus.ie Tel: 090 6468063

Student Counselling: Midwest (Limerick/Tipperary)

Email: counselling.midwest@tus.ie Tel: 061 293106 **TUS is a proud partner of the free anonymous 24/7 text support service Text 50808. This confidential support service is here to listen and support.**



CAREERS & EMPLOYABILITY

At TUS, our goal is to empower you to take charge of your own future through education. As a TUS graduate, a bright future is certainly ahead of you. We want you to feel inspired and motivated, and understand all the options available to you. And most of all, we want to support you take the action required to make informed career and life choices.

The TUS Careers Service supports students and recent graduates in developing and implementing successful career plans. They support students on every step of their career journey with their CV, application forms, social media profile, interview preparation, and career related assessments. They also provide one-to-one support, workshops, seminars, clinics and webinars.

Careers: Midlands (Athlone)

Email: careers.midlands@tus.ie

Tel: 090 6468138

Careers & Employability: Midwest (Limerick/Tipperary)

careersandemployability.midwest@tus.ie

Tel: 061 293442



CHAPLAINCY AND PASTORAL CARE:

Our Chaplaincy and Pastoral Care Service is available to students of all religious denominations and of none. We are here to support you in the areas of Pastoral Care, Community, Spirituality and Personal Development.

For further information please contact:

Chaplaincy / Pastoral Care: Midlands (Athlone)

Email: pastoralcare.midlands@tus.ie

Tel: 087 2402514

Chaplaincy / Pastoral Care: Midwest (Limerick/Tipperary)

Email: chaplaincy.midwest@tus.ie

Tel: 061 293302

TUS LEARNING SUPPORTS

Information on how to apply is available on the Learning Support section of the website and on Moodle

Learning Support TUS - Limerick & Tipperary Campuses:

Learning Support Midwest: lsu.midwest@tus.ie

The Learning Support Unit provides free academic support to all registered TUS students on request.

Learning Support TUS - Athlone Campus:

Academic Writing Centre:

Academicwriting.midlands@tus.ie

Science Tutor: Iain.murray@tus.ie

Maths Tutor: Emer.coughlan@tus.ie

Business Tutor: Brianp.kelly@tus.ie



TUS International Society Note - Oluwadamilola Dorcas Akinsola, Limerick.

Hi guys, I am the International Society President, and my name is Oluwadamilola Dorcas Akinsola, or Dami for short. **WELCOME TO TUS!!**

I'm from Nigeria and currently in my 4th year of studying Mechanical Engineering. I came to Ireland 4 years ago on my own and naturally I didn't actually know anyone or have any friends until I joined the International Society last year. I went from staying home and having nothing to do, to always having somewhere I could go to and people I can talk to, and I definitely didn't expect to be the president after one year. Joining the International Society literally transformed my university experience and I'm sure it will do the same for yours. Now enough about me, let me tell you about the

society. Here at the International Society, our aim is to promote inclusivity and diversity in order to enhance student experience. We do this through the many events and trips we have throughout the year, not excluding international holidays like Diwali and Chinese New Year. We have co-operation from the International Office, and Student Union as well, to organise as many free events as we can for our members. We currently have 160+ members consisting of International and Erasmus Students and we would love for you to join the community as well.

From comfy game nights to exhilarating overnight trips, you can be sure there will always be something you can participate in and enjoy - We can't wait to meet you!!



"Joining the International Society literally transformed my university experience"



TUS International Society Note - Massimiliano Zanotto, Athlone

Hello everyone, my name is Massi and I will be your international student officer for the next academic year in Athlone! First of all... Welcome to Ireland and welcome to Athlone. I remember my first year in Athlone as an Erasmus student, what a great experience it was. Together with a great team in TUS, we will give our best to assist you all year long.

To truly make this experience YOUR experience, you will have the opportunity to join our international society committee, a group of motivated international students who are given the chance to organise events of every kind (trips, parties throughout the year).

I am looking forward to meeting every single one of you and supporting you in every way possible to enhance your experience abroad, please feel free to talk to me and ask me questions, you're never alone. Remember, I am an international student as well in the end, so I know how it feels!

I wish you the very best for the year to come and remember, you will meet some great people from all over the world, so be open-minded and try to make the most out of it, it will be great! You can contact me on +353 0894954299 See you very soon!

**"You will
meet some
great people
from all over
the world"**



8



Learn some words 'as Gaeilge' (in Irish!)

English	Translation in Irish	Pronunciation
Hello	Dia Dhuit	dee-a-gu-ith
Goodbye	Slán	Slahn
Welcome	Fáilte	fall-cha
How are you?	Conas atá tú?	con as tah too
My Name is...	Is mise...	is misha...
Cheers	Sláinte	slahn-che
Thank you	Go Raibh Maith Agat	go rayv mayth agat
You're Welcome	Tá fáilte romhat	taw fall-che roh-ut
Please	Le do thoil	la-dee thoil
Ireland	Éire	air-ah
Irish	Gaeilge	gwayl-ga
Athlone	Baile Atha Luain	ball-yeh ah loo-in
Limerick	Luimneach	lim-nach
Tipperary	Tiobraid Árann	tib-rod ahr-ahn

Ireland

Ireland

Ireland is widely known as one of the friendliest, and welcoming countries in the world! In fact, the Irish for Welcome is Cead Mile Fáilte (pronounced Kay-Ed Meela Fall-cha) which literally translates to 'a hundred thousand welcomes'. We are a country steeped in history & tradition – a small island nation, with a population of just over 5 million people located on the western most tip of Europe – and yet our culture is celebrated all over the world.

Some of the world's biggest Tech & Pharma companies have based their European Headquarters in Ireland - and one of the main reasons that they are attracted to Ireland is because they have access to a highly educated workforce due to Ireland's world class education system! This is fantastic news for our students because it means there are amazing graduate job opportunities available to them right on their doorstep.

You will never be short of places to visit in Ireland from the extraordinary Cliffs of Moher in Co. Clare right across the country to Temple Bar in Ireland's Capital City Dublin, there is a long list of places to tick off your bucket list. Whether you are looking for tourist spots, good food, nightlife, festivals, sporting events or Museums – Ireland will not disappoint.

Ireland is known as the gateway to Europe, studying in Ireland means you will have easy access to all the major cities in Europe – what better way to spend a long weekend than hopping on a flight and exploring Madrid or Berlin?



You can even earn some extra money to explore by working part time – International Students studying in Ireland can work 20 hours per week during term time and 40 hours during holidays!

Still not convinced? These Instagram accounts are guaranteed to make you fall in love with the Emerald Isle:

»[Limerick.ie](#)

»[Wild Atlantic Way](#)

»[Tourism Ireland](#)

»[Discover Ireland](#)

Read about where our current students travel to in their free time:

Vinicius has some great **hiking tips**

Emily recommends a trip to **Westport**

And Florangela lets us know - not all trips go **to plan!**



St. Patrick's day is celebrated in over 50 countries every year - It is celebrated in more countries than any other national festival.

The longest place name in the English Language is *Muckanagherdauhaulia* –a small village in Connemara, Co Galway.

The Cliffs of Moher can be seen in the movie *Harry Potter and the Half Blood Prince* and *the Princess Bride*.



Halloween originated in Ireland.

Athlone

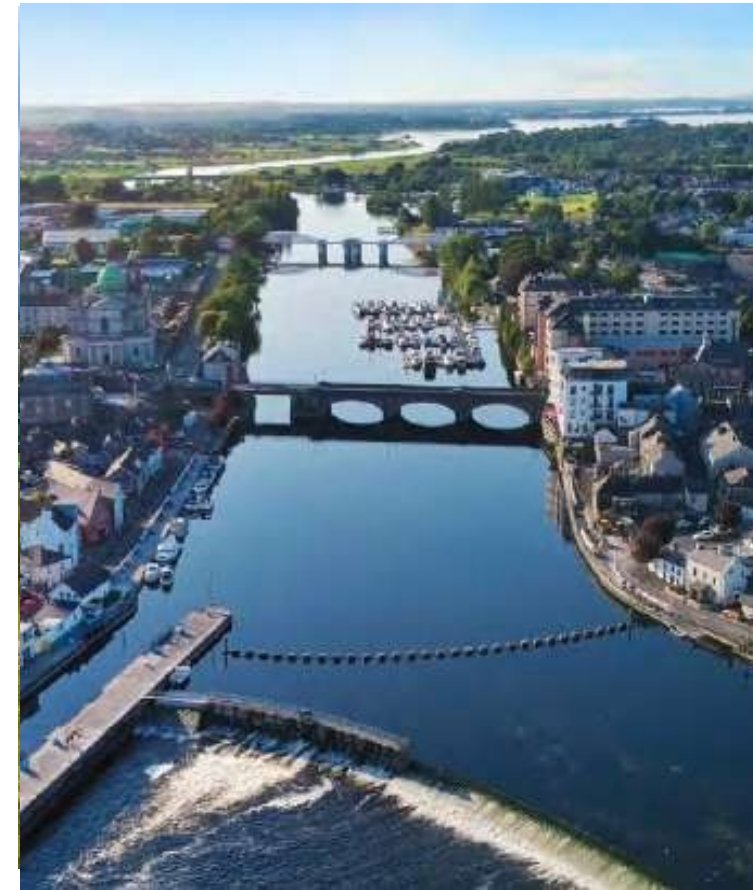
Athlone is a large and bustling town located in the heart of Ireland. It's a town steeped in culture and history. It is situated on the banks of the River Shannon, Ireland's longest river, and spans not only two counties - Westmeath and Roscommon – but also two provinces - Leinster and Connaught. Athlone has developed as a major tourism point in Ireland. Its central location in the country means that it's only 90 minutes from Dublin Airport and within two hours of major cities such as Dublin, Galway, Limerick and Kilkenny. Athlone is well serviced by Irish Rail and Bus Eireann with bus stops directly outside the campus and a bus link directly to the train station.

Although a regional town with a population of 25,000, all amenities associated with a larger city are available in Athlone, including two large shopping centres with high street shops, cafes, a leisure centre with a swimming pool and gym, sports facilities, skate park and bowling alley and cinema complex as well as theatres and an art gallery. With Sean's Bar being the oldest pub in Europe, you can join countless visitors who have been stopping here for a drink, a chat and maybe a bit of music for more than a thousand years.

Bay Sports

Bay Sports, located at Hodson Bay, is home to the largest floating water park in Ireland and one of the largest floating waterslides in the world. You can also enjoy kayaking and sailing by the majestic shores of Lough Ree.

Treks & Trails Whether you want to hear peaceful whispers of the wind and water lapping on the shores of the Shannon or feeling more energetic and fancy a cycle on the Greenway, enjoy the fresh air and explore Athlone's treks and trails.



Athlone is home to Ireland's oldest pub - Sean's Bar

Athlone Castle has been the centrepiece of many important events in Irelands long history



Limerick

Limerick is located in the Mid West of Ireland. It is a young, warm, welcoming and vibrant city – and with 3 major colleges located here almost 50% of our population is under 30, with 1 in 5 of every person in Limerick being a student in Higher Education. It is a very student orientated city – and has even been recognised by UNESCO as a centre for learning excellence.

In 2017 Limerick was voted European City of the Future. We are the commercial capital of the mid-west region and are in the top 10 cities in ALL OF EUROPE for attracting investment, growth and opportunity! Think of all the cities across Europe – Paris, Rome, Berlin, London, Madrid – Limerick is among the top 10!

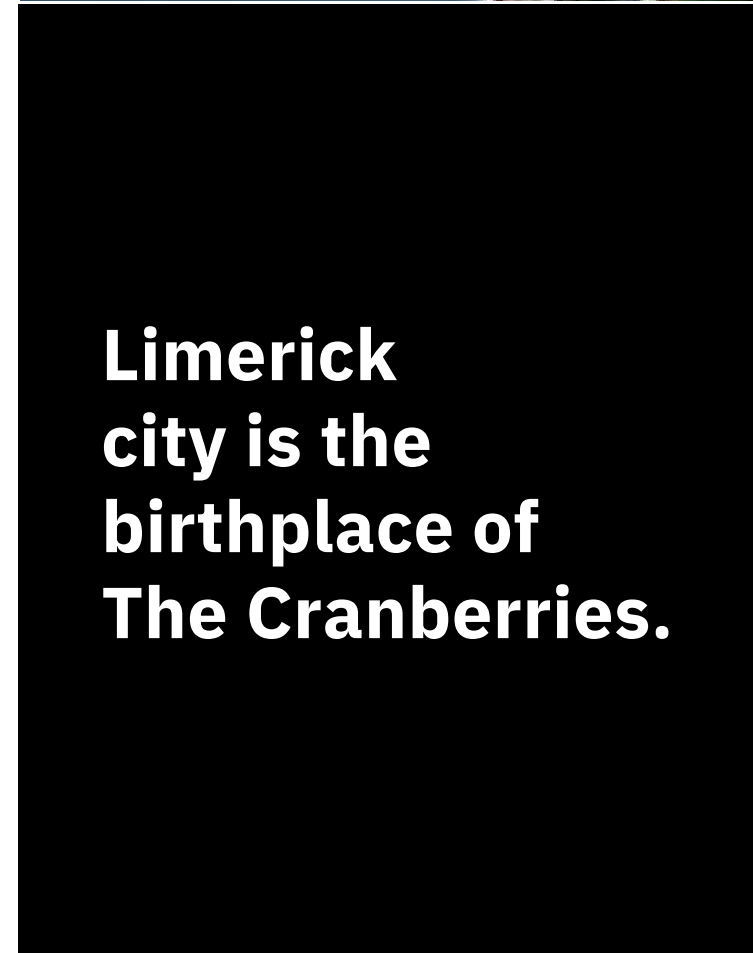
One of the most attractive points about Limerick city is our living costs. We are 50% more affordable to live in than Dublin and 20% more affordable than Cork & Galway. It means students who choose Limerick as their study destination do not need to give up anything – they will get a great city life, with part time job opportunities and all at an affordable price – and that's not something that every city can offer!

Limerick is perfectly located – we are very central and are just a short journey from Ireland's other major cities (just an hour from Galway, over an hour from Cork and 2 hours from Dublin). We are also connected by bus and train services so students coming to study in Limerick have the opportunity to travel all across Ireland during their studies.

Just an hours drive from our Moylish campus you will find the Cliffs of Moher – one of Ireland's most famous tourist destinations. In fact Limerick City is a the gateway city to the Wild Atlantic Way, which was named as one of the worlds best roadtrips by Lonely Planet.



Limerick city was founded in 812 by the Vikings, making it one of Ireland's oldest cities.



Limerick city is the birthplace of The Cranberries.



Clonmel & Thurles

Clonmel

Clonmel is situated in the south of the country in the heart of the Golden Vale. With a population of almost 20,000, Clonmel town has numerous cafés, restaurants and lively pubs, and offers plenty of amenities for students living locally. It has excellent road and rail links with the cities of Limerick, Cork and Dublin and is home to a thriving industrial hub serving the beverage, food and pharmaceutical industries. If you enjoy the great outdoors, Clonmel is perfectly located in a valley surrounded by mountains and hills including the Comeraghs and Slievenamon. After a hard day's work in college, clear the head and take in the beautiful Suir Blueway Tipperary, with 21km of the 53km route accessible by bike or foot. You can follow the towpath from Clonmel to Carrick on Suir and take in the superb scenery along the route. In addition, there are watersport activities at various points along the river. For more information on things to see and do in Clonmel, please visit the following website: »www.clonmel.ie

Thurles

Located at the heart of Ireland's famed Suir Valley, Thurles is a bustling and lively town surrounded by the mountains of the Silvermines and Slieveardagh. It enjoys transport links with Limerick City approximately 40 minutes to one hour away. The population of the town itself is around 10,000 but it serves a populous rural hinterland and is a key centre within the network of towns that make up Ireland's Mid-West Region.

The thriving centre of the town of Thurles has all of the retail and commercial facilities that a modern student requires. As the birthplace of the Gaelic Athletic Association (GAA) Thurles is at the very heart of the history of Irish sport. It's GAA ground, Semple Stadium, is Ireland's second largest sports arena with a capacity for 60,000 people, second only to Croke Park Stadium, Dublin.

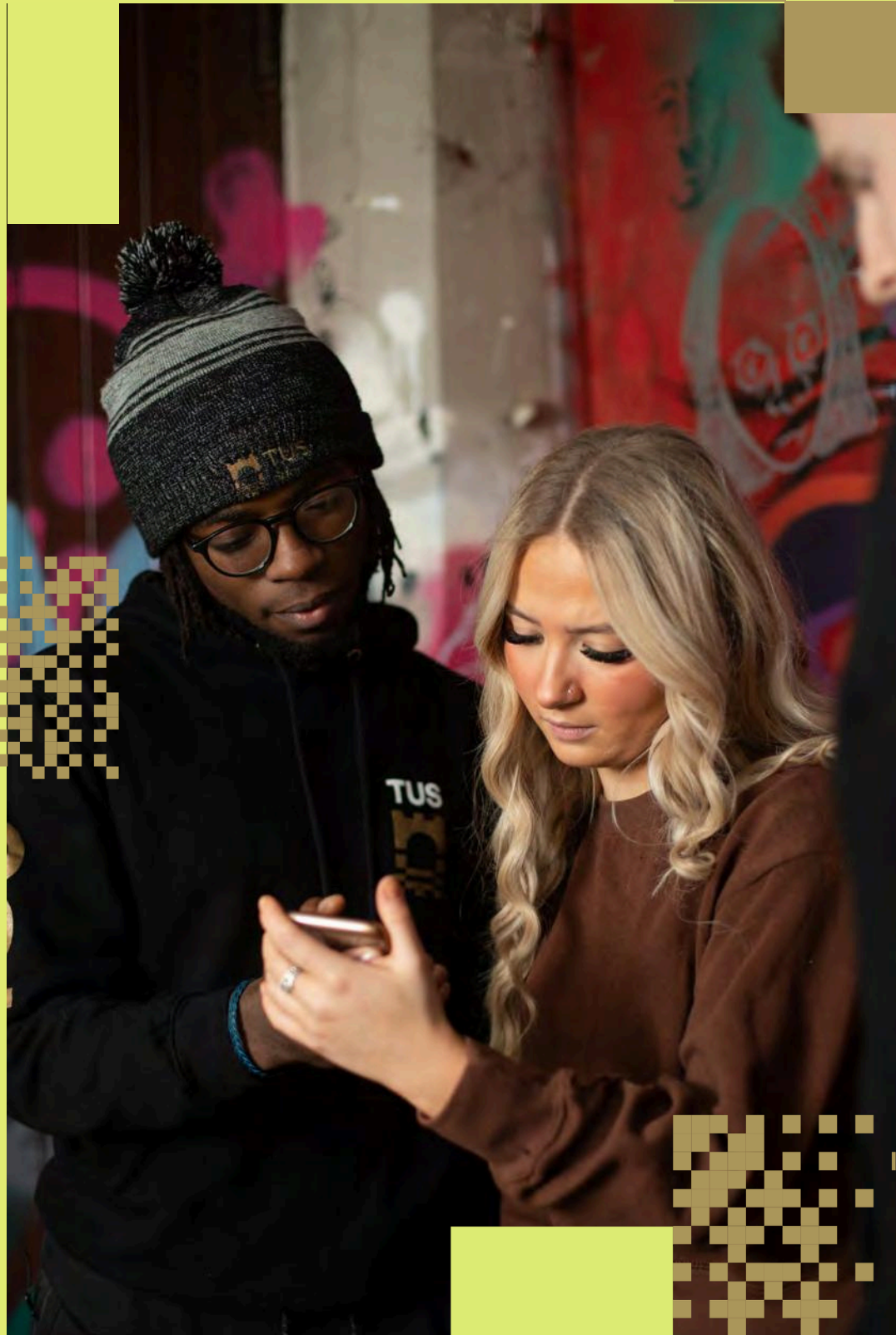
Thurles boasts many excellent cultural and recreational facilities including The Source Arts Centre, Tipperary's most exciting cultural & entertainment venue presenting music, dance, comedy, film, children's events, visual art & more. Horse racing, soccer, rugby, cycling, golf, angling, hockey and swimming are all catered for.

Thurles's place at the heart of Ireland's sporting heritage is one of the key reasons that TUS located a dedicated Sports Campus here – along with its state-of-the-art sports and fitness facilities.

For more information on things to see and do in Thurles, please visit the following website: »www.thurles.ie




9.



Connect with us on Social Media

 TUSGlobalOffice

 tus_global_

Important Numbers & Useful Links

Emergency Services in Ireland

Dial 999 or 112 for an ambulance or for the police in an emergency

Medical Out of Hours Limerick Doc:

Tel: 0877551570

Medical Out of Hours Athlone

Tel: 1800 302 702

(6pm – 8am & at weekends)

Please note fees apply

Out of Hours Supports: TUS is also a proud partner with the following anonymous digital support services:

- Free anonymous 24/7 text support service Text TUS to 50808.
- Free anonymous peer support Login [here](#) using your TUS email.

TECHNOLOGICAL UNIVERSITY OF THE SHANNON:

- TUS Official Website: www.tus.ie
- Life at TUS: www.tus.ie/life-with-us
- Midlands Campus phone number - +353 90 646 8273
- Midwest Campus phone number - +353 61 293 400

LEARN MORE ABOUT ATHLONE, LIMERICK & IRELAND:

- Athlone.ie www.athlone.ie
- Limerick.ie: www.limerick.ie
- Discover Ireland: www.discoverireland.ie

TRAVEL:

- Irish Rail: »www.irishrail.ie
- Leap card: »www.studentleapcard.ie
- Bus Eireann: »www.buseireann.ie

VISA & OTHER USEFUL LINKS:

- INIS (Visa & Immigration)
- Embassies in Ireland
- PPS: How to Apply

USEFUL APPS IN IRELAND:

(search for these in your IOS or App Store)

- **UberEats** – for all your takeaway needs
- **JustEat** – another app to help with those pizza cravings

- **Met Eireann** – Irelands weather app – always helpful to know if you need to bring an umbrella or not

- **Free Now** – FreeNow can be used for all your taxi needs

- **Ireland Travel Guide** – Plan your adventures around Ireland

- **Entertainment.ie** – keep up to date with cinema listings, concerts & events happening in your area

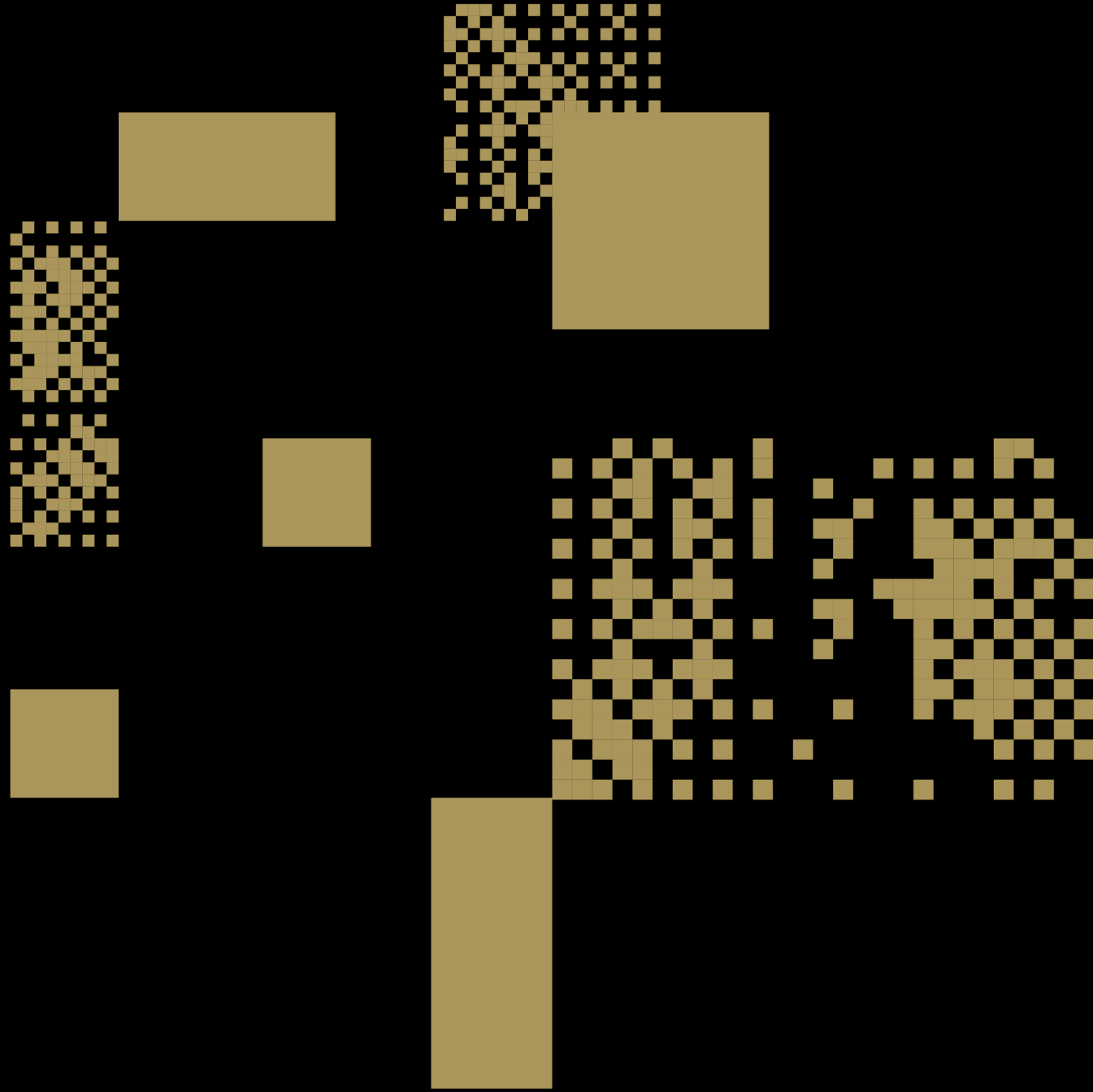
- **Ryanair.ie** – have a long weekend coming up? Why not book a last minute flight to Paris?





TUS

Technological University
of the Shannon



Global@tus.ie



www.tus.ie/global



@tus_global_



@TUS International



TUS Global Office