

THE FUTURE OF  
GENERATIVE AI IN  
OUR COURT ROOMS:  
THE RISKS &  
BENEFITS

Tara Kerins Aylmer

# TECHNOLOGY IS NEUTRAL

It's true nature is revealed through its use.



A close-up photograph of a wooden gavel resting on its wooden block. The gavel has a polished brass head and a dark wood handle. The background is a soft, out-of-focus light blue. A dark rectangular overlay is positioned in the center-left, containing the text 'THE RISKS' in white, bold, sans-serif capital letters. A white L-shaped graphic element is located in the top-left corner of the dark overlay.

# THE RISKS



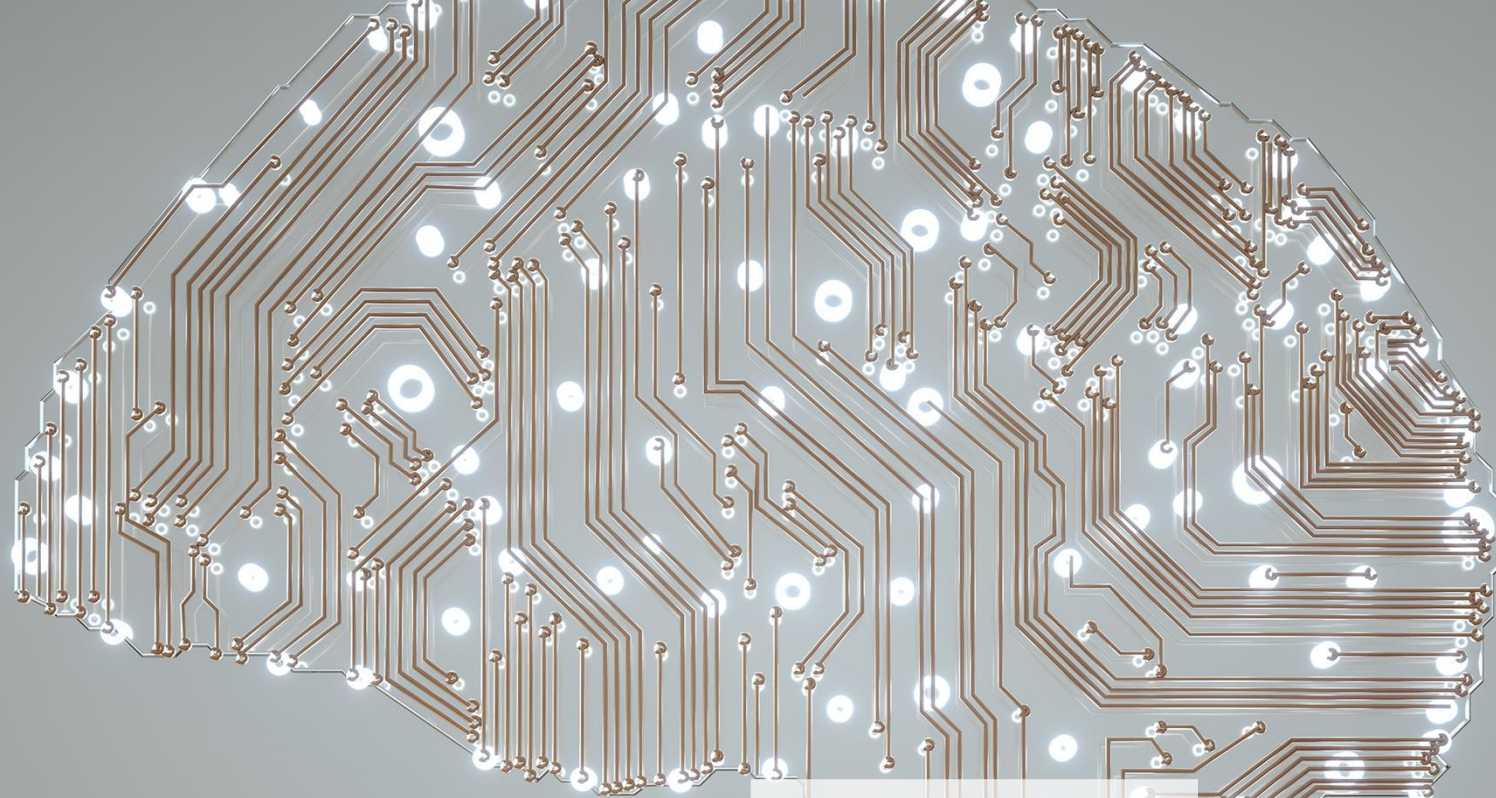
**THREAT TO LEGAL  
INTEGRITY**



**EROSION OF FAIR  
TRIAL RIGHTS**



**ERROR &  
FABRICATION**



# THE BENEFITS



**GREATER ACCESS FOR LAY LITIGANTS**

**IMPROVED EFFICIENCY**

**ERASURE OF LANGUAGE BARRIERS**



# MOVING FORWARD

Towards Improving Access to Justice with Generative  
AI



# *SHOULD* WE USE AI

Tara Kerins Aylmer  
Kerinsat@tcd.ie

