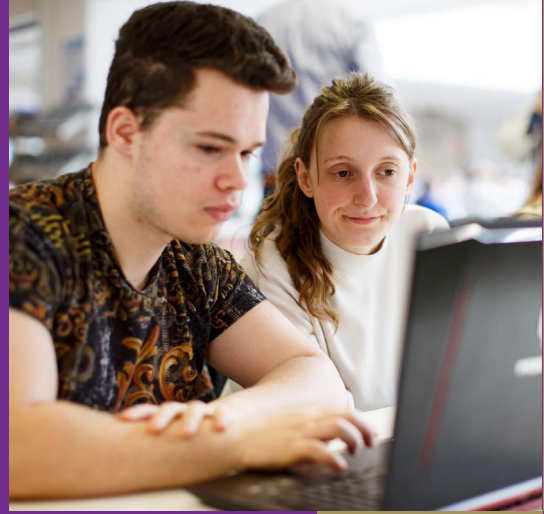




**CIPD**

Centre for Pedagogical  
Innovation and Development



# Certificate in Action Research for Educators

Level 9, 15 ECTS Credits



## Delivery Mode

This module will be delivered online.

## Module Aim

Action research is a research methodology focused on transformative change within one's own professional practice through engagement with the concurrent processes of doing research, taking action to initiate change, and critical reflection. The overall aim of this module is to equip educators with the skills to engage in these concurrent processes to improve their practice. This module will cater for educators at all career phases seeking to inform and improve their practice through research. Participants will be required to conduct small scale action research into their practice. Engagement in and reflection on educational research will be promoted through peer-based learning and support activities using a blended approach.

## Module Learning Outcomes

On successful completion of this module the participant will be able to:

1. Identify and develop a relevant research concern related to their practice.
2. Engage in critical reading around their chosen topic.
3. Select and justify an action research process to investigate their practice.
4. Implement the selected action research process to address their concern in a collaborative/relational manner.
5. Critically reflect on the process undertaken.
6. Disseminate their findings.

## Module Assessment

Participants will be required to employ their knowledge of the action research process as it applies to their own educational practice through the completion of fair, inclusive, and authentic assignments.

The module is 100% continuously assessed using the following assessment types:

- A rationale for the selection of a research concern as it relates to practice.
- An annotated bibliography.
- A report on their action research project.
- A presentation of their critical reflection on the action research process and dissemination of their findings to their peers.

Before final submission for summative assessment, participants shall have the opportunity to submit draft versions of each assessment type, for which criterion-referenced formative feedback will be provided using rubrics.

## For further information please contact:

Centre for Pedagogical Innovation and Development  
(CPID) TUS Midlands

Tel: 090 648 3051

Email: [cpid@tus.ie](mailto:cpid@tus.ie)