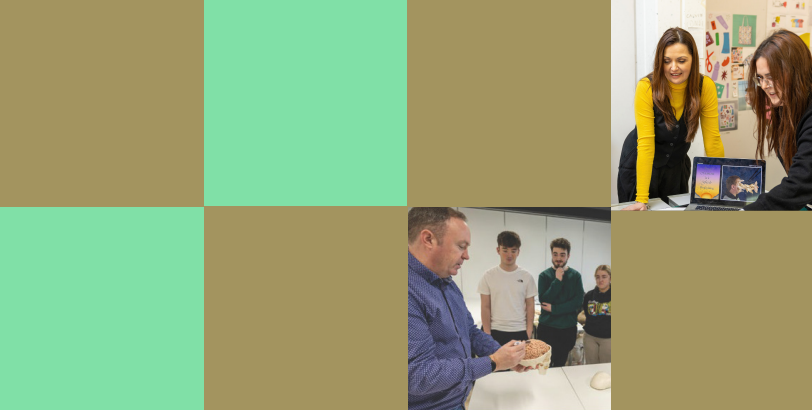


Professional Development Sessions

Date: November 4th - 20th, 2025



Tuesday 4th November 1:00 pm - 2:00 pm	Assessment Design - How Susceptible is your module's assessment to GenAI? This workshop introduces the Manchester Metropolitan University's structured 3-step strategy to implement AI principles in assessments by promoting cooperation with AI tools and preventing collusion. <u>Register here</u>	Dr Michael Russell, CPID
Thursday 6th November 1:30pm - 2.30pm	LAMS LAMS is an open-source learning design system for designing, managing and delivering online collaborative learning activities. It provides teachers with a visual authoring environment for creating sequences of learning activities. <u>Register here</u>	Ernie Ghiglione, LAMS Project Manager, (External Facilitator) Dr Anne Marie O’Brien & Clara Keevey, CPID
Monday 17th November 1:00 pm - 2:00 pm	Information session - PhD in E-Research and Technology Enhanced Learning with Lancaster University This session introduces a PhD programme in E-Research and Technology Enhanced Learning, designed for professionals across sectors who educate or train others. It is ideal for those aiming to pursue advanced research in educational technology within their own practice. <u>Register here</u>	Brett Bligh, Lancaster University (External Facilitator)
Tuesday 18th November 12:00 pm - 1:00 pm	Information session - PhD in E-Research and Technology Enhanced Learning with Lancaster University This session introduces a PhD programme in E-Research and Technology Enhanced Learning, designed for professionals across sectors who educate or train others. It is ideal for those aiming to pursue advanced research in educational technology within their own practice. <u>Register here</u>	Brett Bligh, Lancaster University (External Facilitator)
Thursday 20th November 12:30 pm - 1:15 pm	Get to know SI-PASS (Supplemental Instruction-Peer Assisted Student Support) This 45-minute online session, including a 30-minute presentation followed by a 15-minute Q&A, is designed to explain what SI-PASS is, how it works, and why it is effective. This session is ideal for anyone considering the adoption of SI-PASS, as well as for new staff at institutions already engaged in the programme. <u>Register here</u>	European Centre for SI-PASS (External Facilitator)
Thursday 20th November 1:00 pm - 2:00 pm	Creating Universal Design for Learning (UDL) Resources This practical workshop will give you the skills to assess your own resources now and in the future. Bring along a Word document, PowerPoint or Moodle page that you’d like to review using the plus-one approach. <u>Register here</u>	Clara Keevey & Aoife Walsh, CPID

